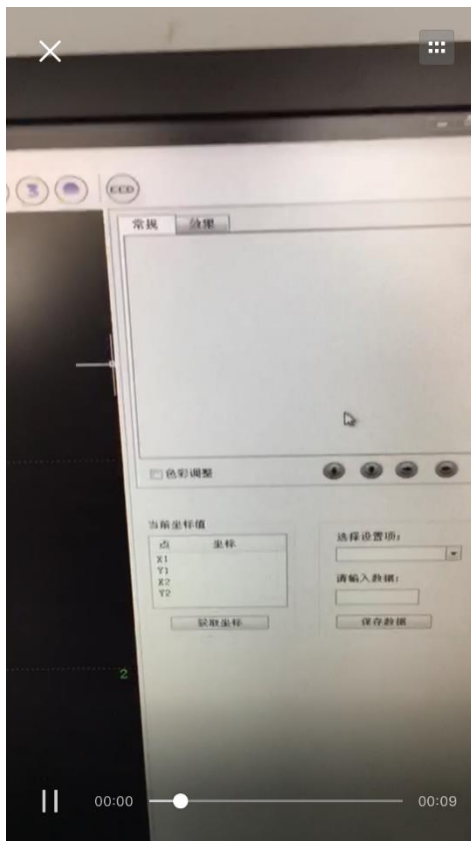


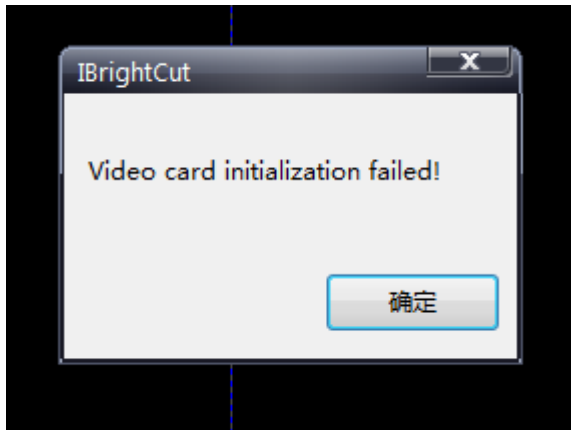
# CCD camera without signal

## Common problems and solutions

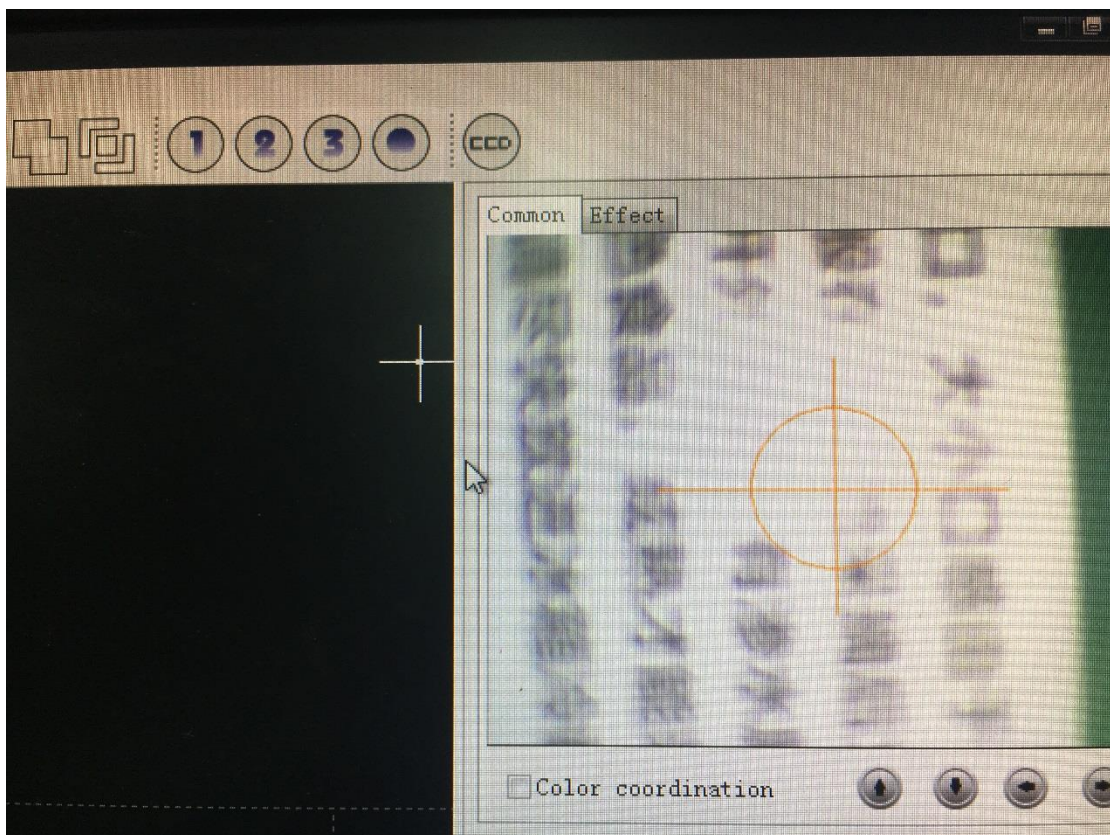
1. When the interface for common setting is blank, please make sure you have installed the graphics card drivers on PC, and update drivers to the latest version.



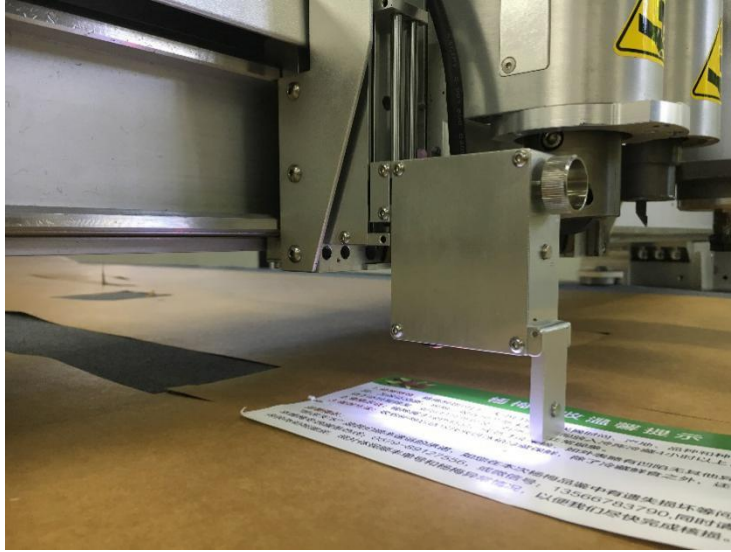
2. When you click the CDD button, IBrightcut shows “Video card initialization failed”. Check whether the video card is installed correctly or not.



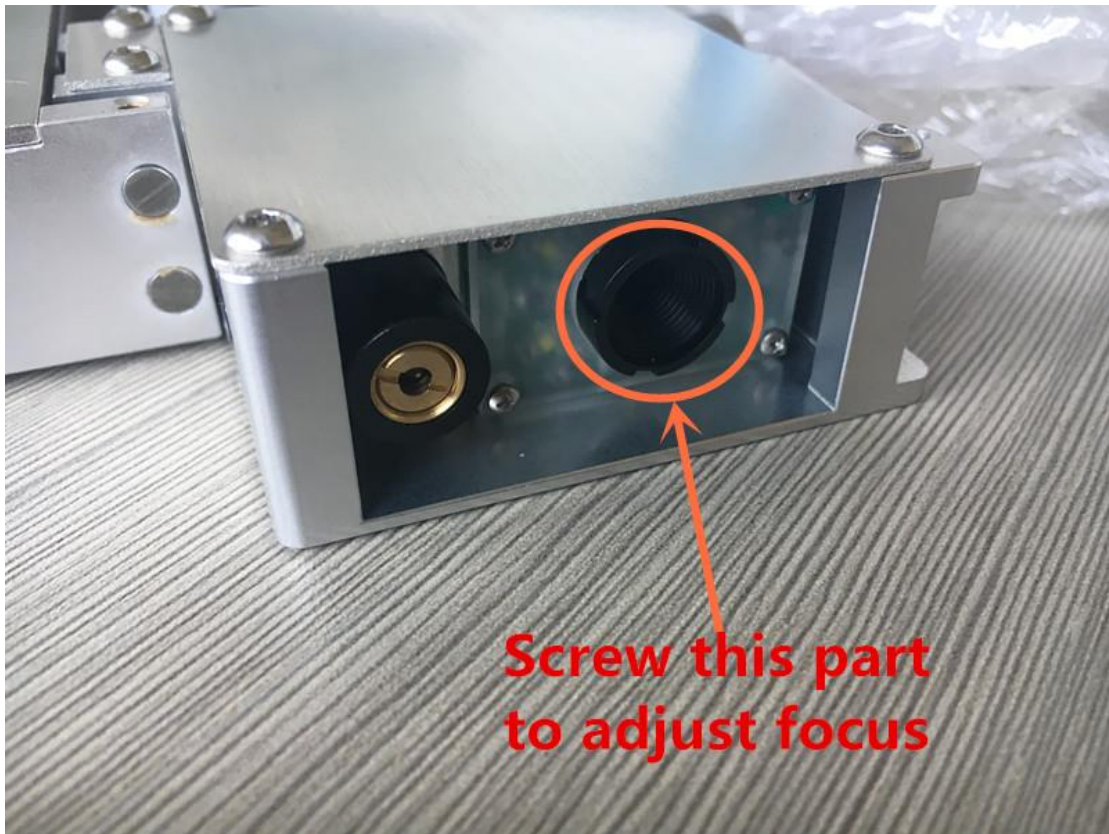
3. In the interface for common setting, picture isn't clear.



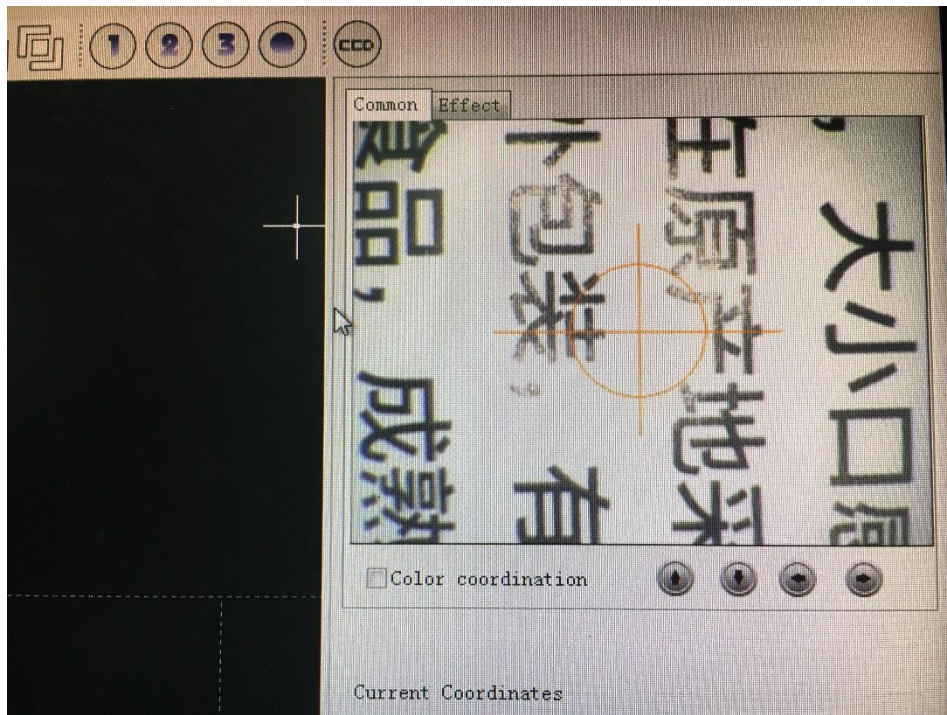
Adjust the CCD height which is shown in the below picture.



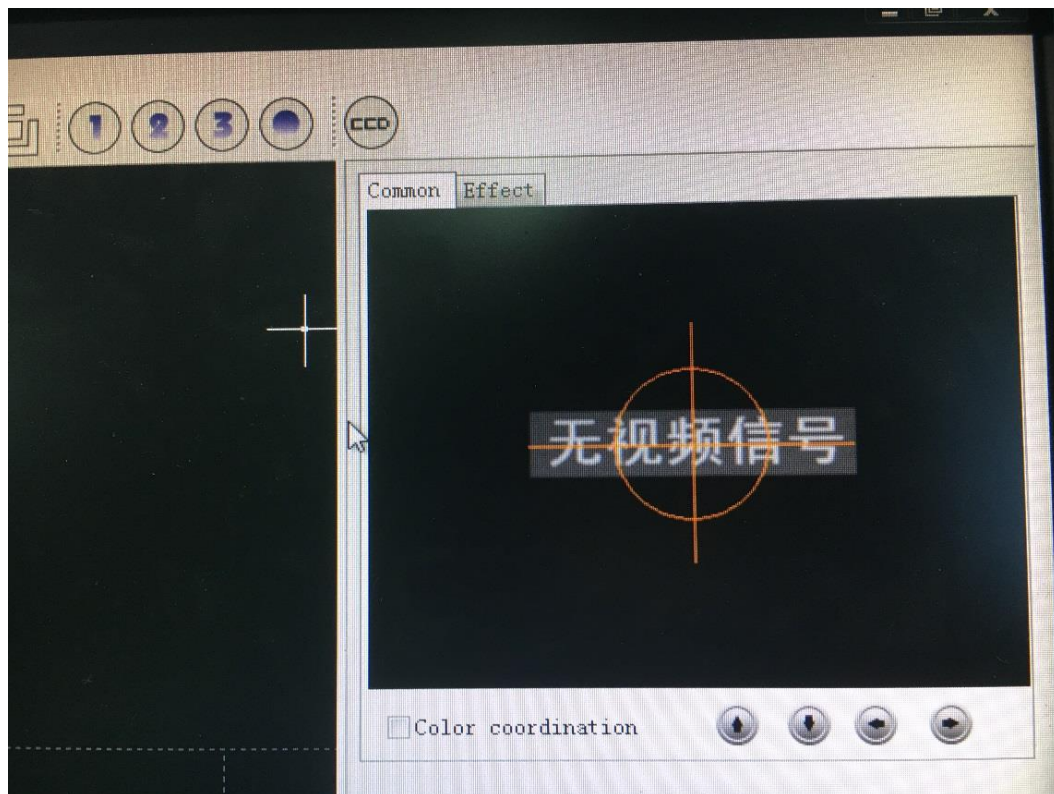
If the image is still not clear, adjust the CCD focal spot(focus) shown in the below picture.



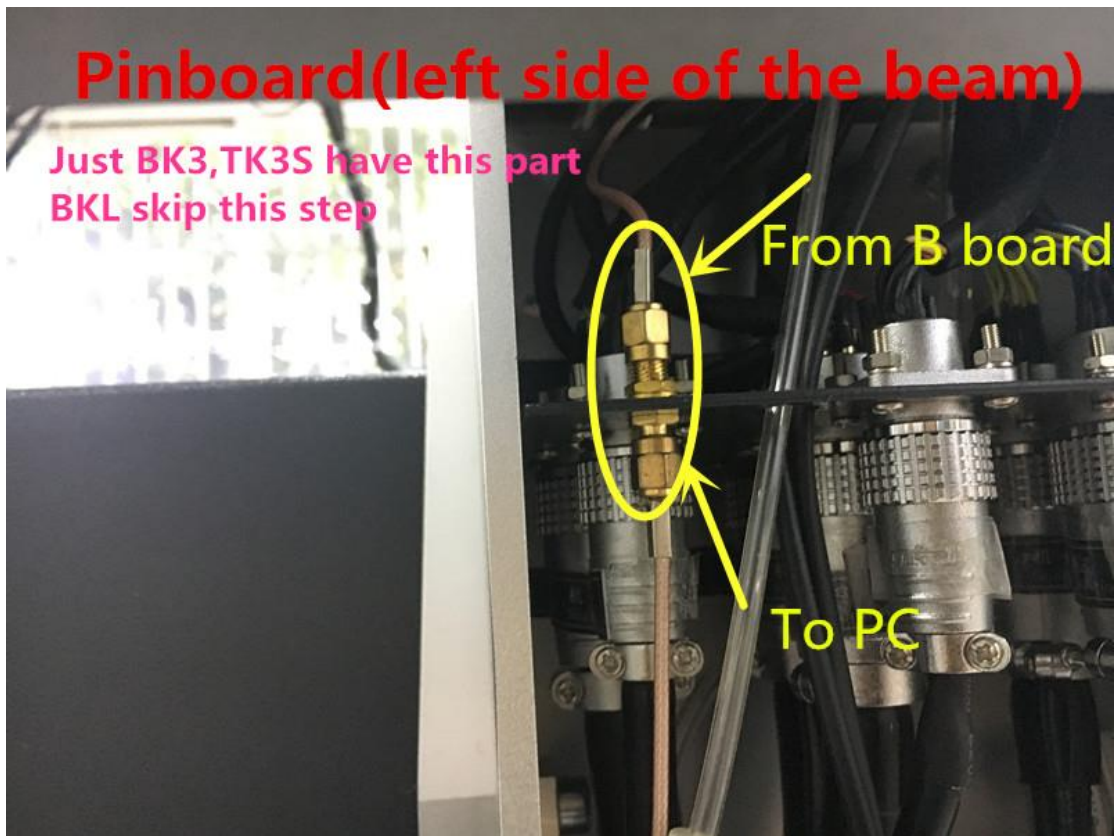
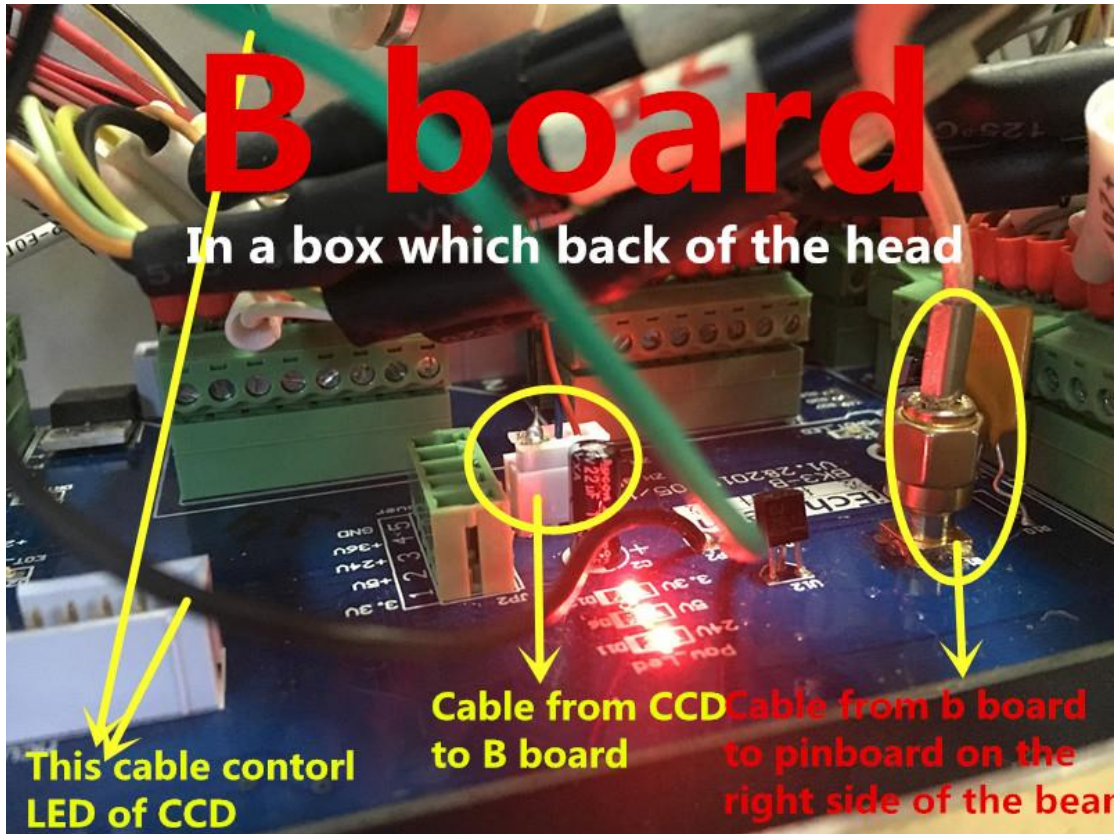
The good image should be like the one in the below picture.

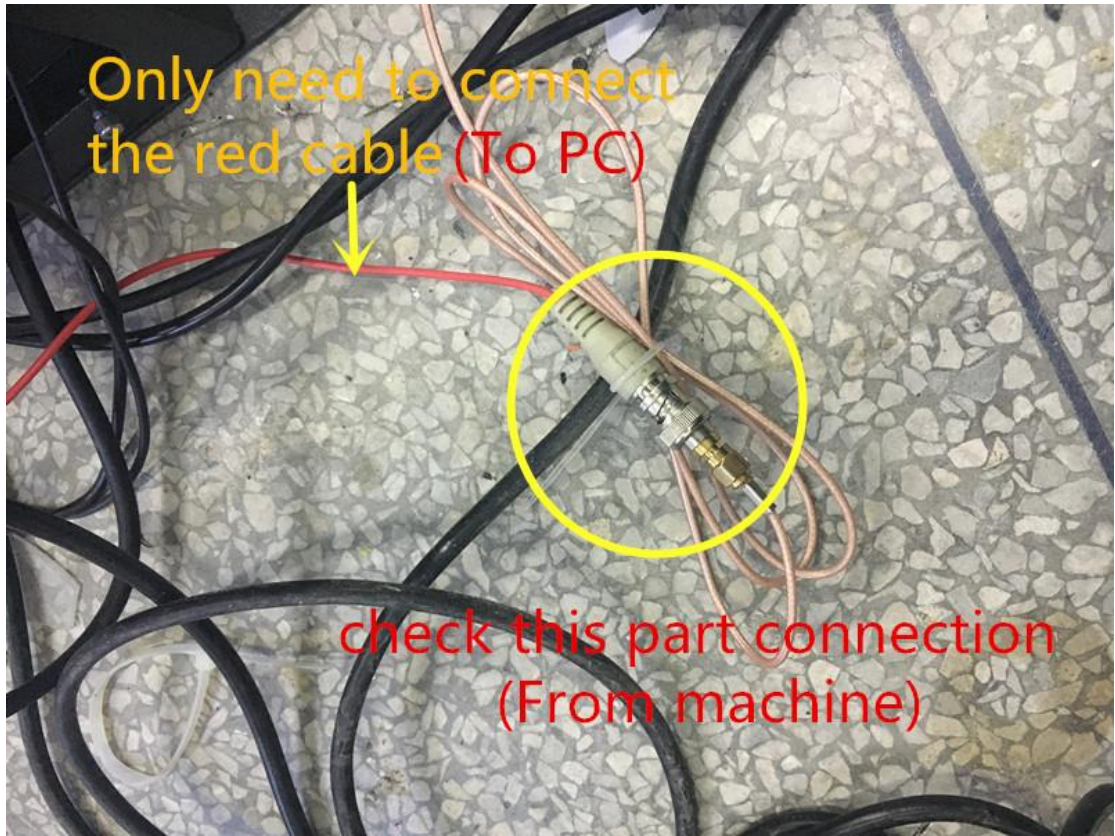


4.No video signal



Check the CCD cable connection from CCD to PC.





Only need to connect  
the red cable (To PC)

check this part connection  
(From machine)