

QR CODE FUNCTION AND SETTINGS

1. QR function

With this function, after the QR code is scanned, the file will be imported automatically and the mark points will be scanned for cutting. The manual import process is omitted, and different materials can be placed together. The camera will automatically identify different QR codes to import different files and improve efficiency.



2. SETTINGS

Open a web or software which is used to create the QR code. Then input the name of your file to create the QR code. Because after the camera scanning the QR code, it will automatically find your file by the name.

0203032020001	2020/4/10 12:26	DXF 文件
0203032020002	2020/4/10 12:26	DXF 文件
0203032020003	2020/4/10 12:28	DXF 文件
0203032020004	2020/4/10 12:35	DXF 文件
0303012020001	2020/4/10 11:38	DXF 文件
0303012020002	2020/6/16 13:42	BRG 文件
0303012020002	2020/4/10 11:40	DXF 文件
0303012020002	2020/6/16 13:42	配置设置
0303012020003	2020/4/10 11:46	DXF 文件
0303012020004	2020/4/10 11:45	DXF 文件
0303012020005	2020/4/10 12:18	DXF 文件
0303012020006	2020/6/16 13:49	BRG 文件
0303012020006	2020/4/10 12:20	DXF 文件
0303012020006	2020/6/16 13:49	配置设置
0303012020007	2020/4/10 12:21	DXF 文件
0303012020008	2020/6/16 10:25	BRG 文件
0303012020008	2020/4/10 12:22	DXF 文件
0303012020008	2020/6/16 10:25	配置设置

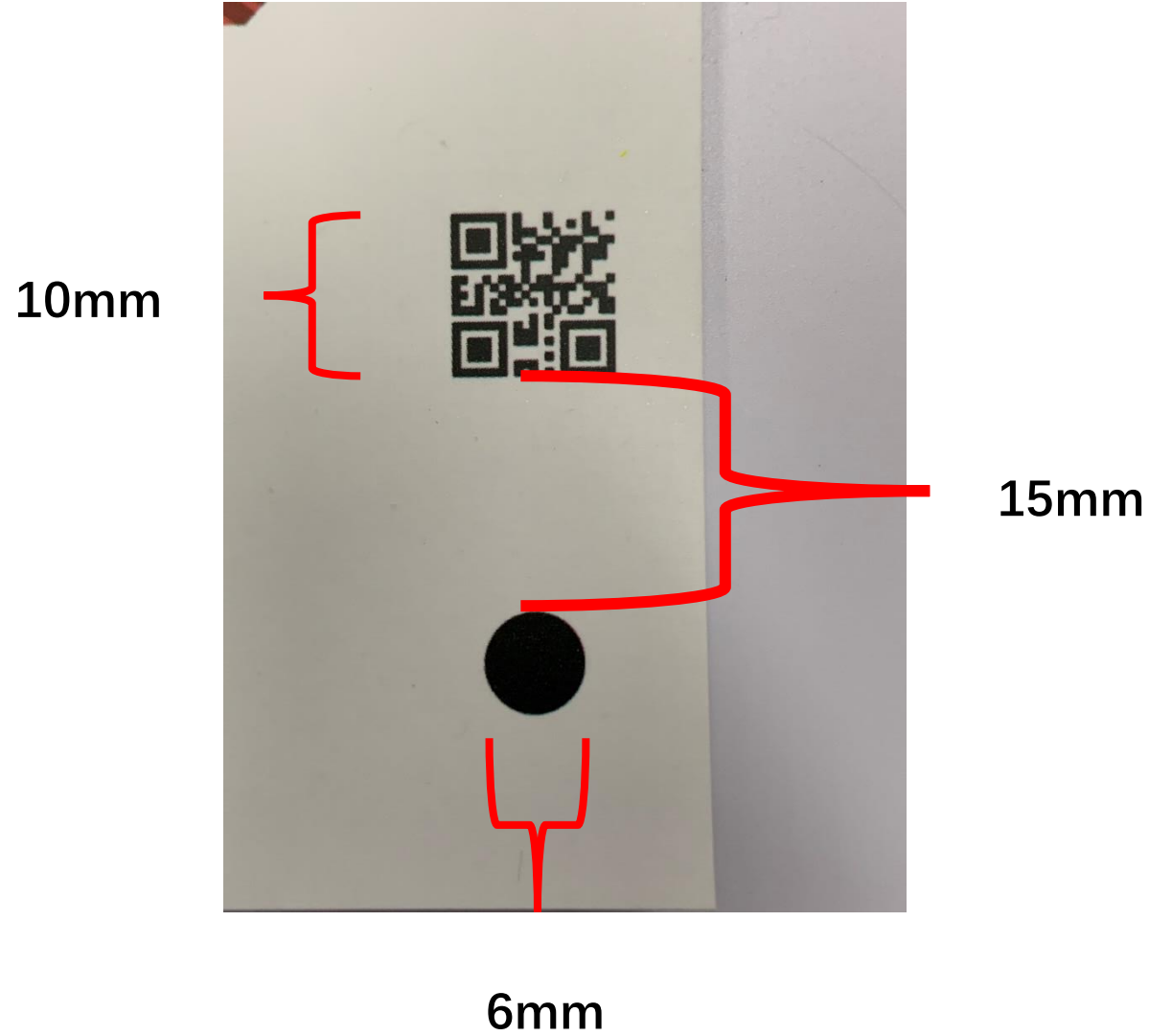
视频 名片 微信 表单 更多工具 + 新建活码 解码

✅ 二维码已生成

0303012020001

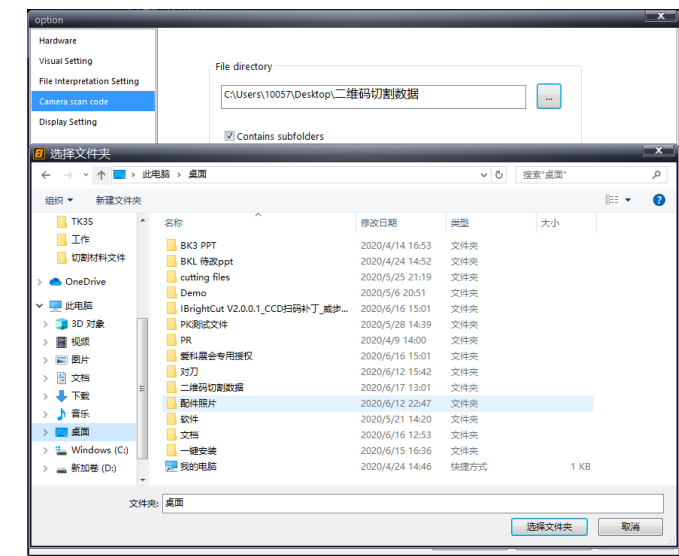
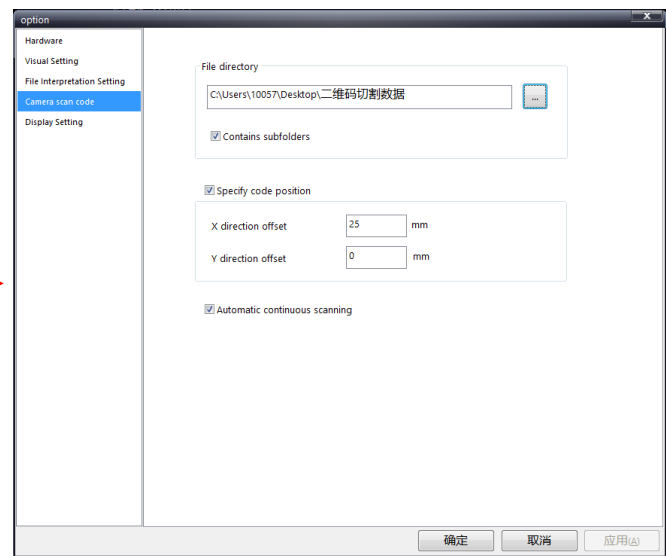
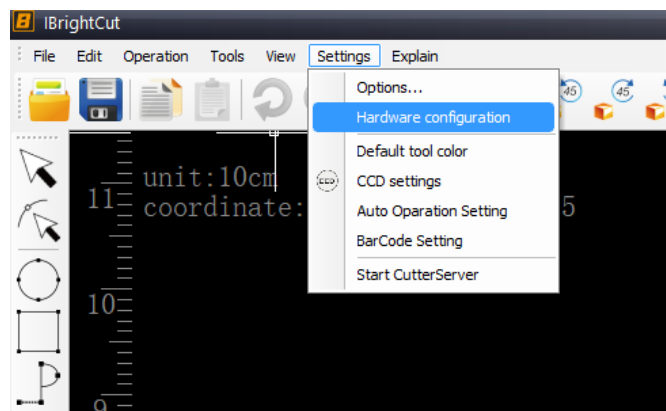
再建一个

保存图片



When you need to print the material, this is the size we usually use and recommend

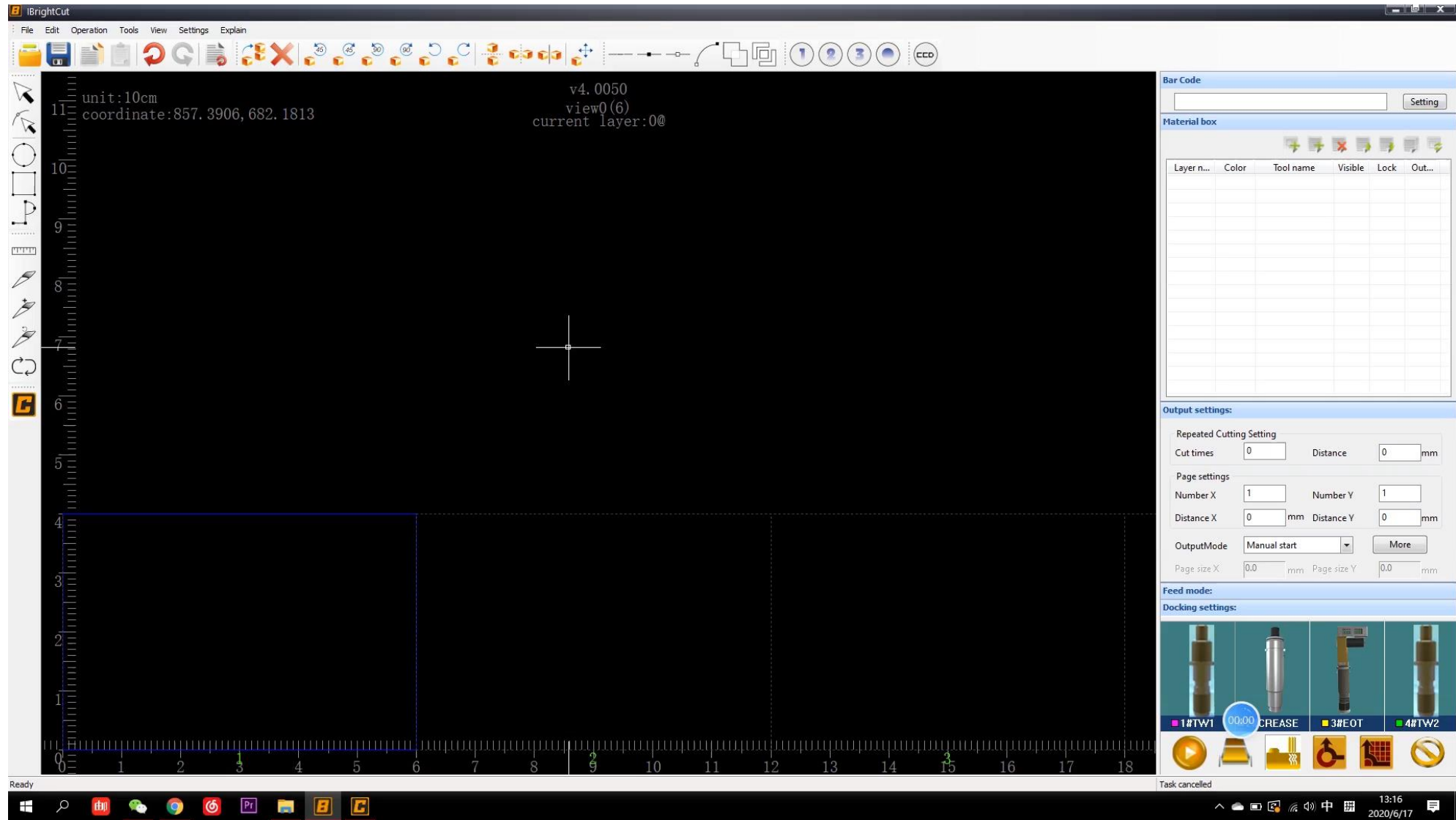
Open the iBrightcut → Settings → Hardware configuration



Choose the right path of your files. Need to choose contain subfolders. The X direction offset is 25 mm as recommend before.



After all the settings are set, open the camera and move to the right position, click the QR icon. Then it will automatically input the file and cut.



Setting video