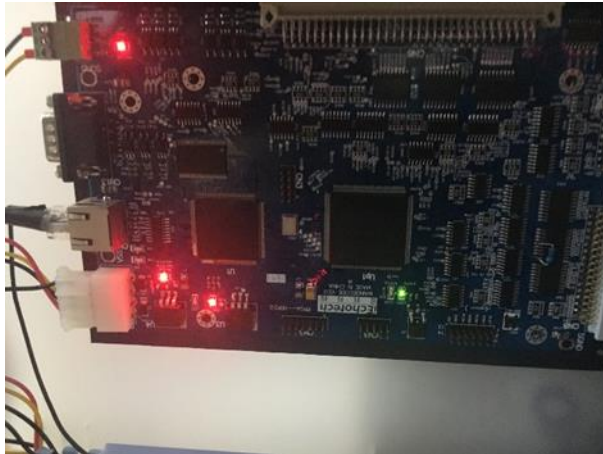


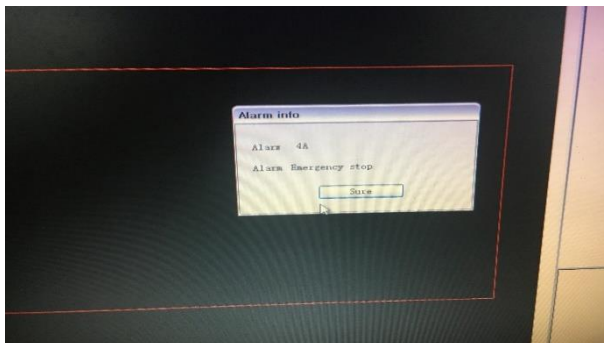
4A/AL013 alarm diagnosis

Description:

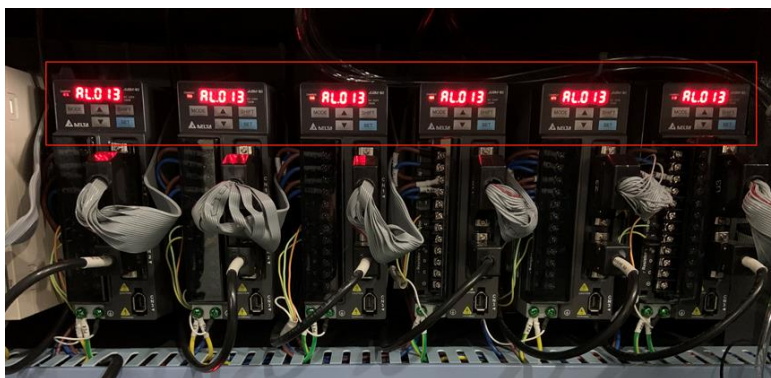
The DSP board flashes a red light,



Cutterserver display alarm 4A,



All motor drivers display AL013

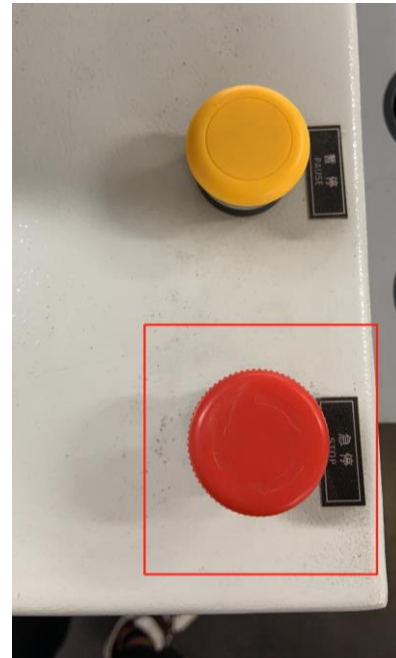


Corrective Actions:

1. Check emergency button and cables.

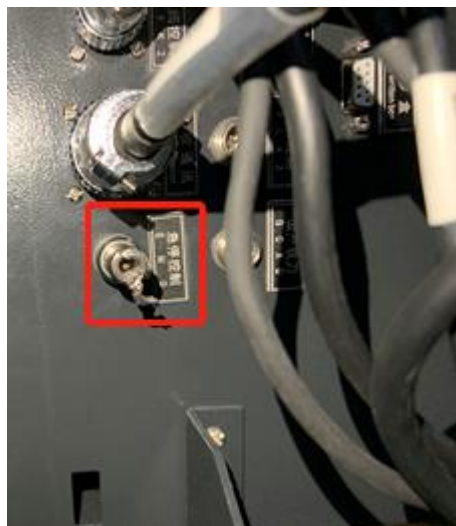


TK3S/BK3 PC table



BKL PC table

The cable from button connect to electric box.



BK3/TK3S EMG socket

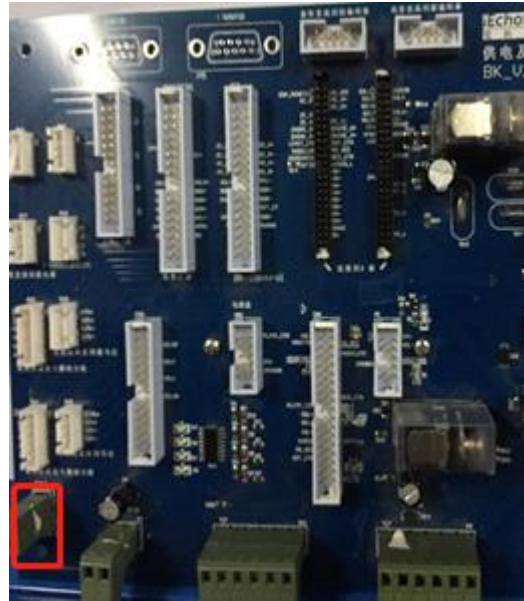


BKL 急停 socket

This socket connects to power board in electric box.



BK3-Power board-P61



BKL-Power board-P24



TK3S-Power board- J9_1/2

Use multimeter, change it to resistance position to measure.
Normally, there should has communication between two pins.

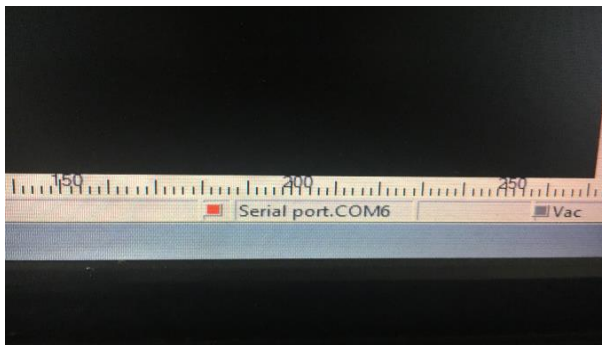
2. Check DSP board CN9 and CN7 plugs and cables.



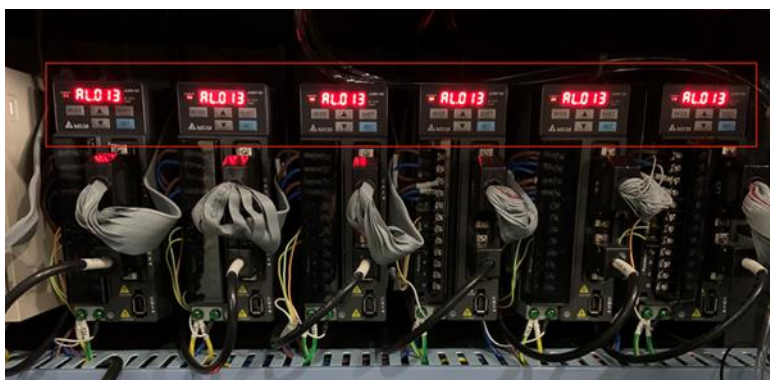
Description:

The DSP board LED doesn't light

PC isn't connected with machine



All motor drivers display AL013

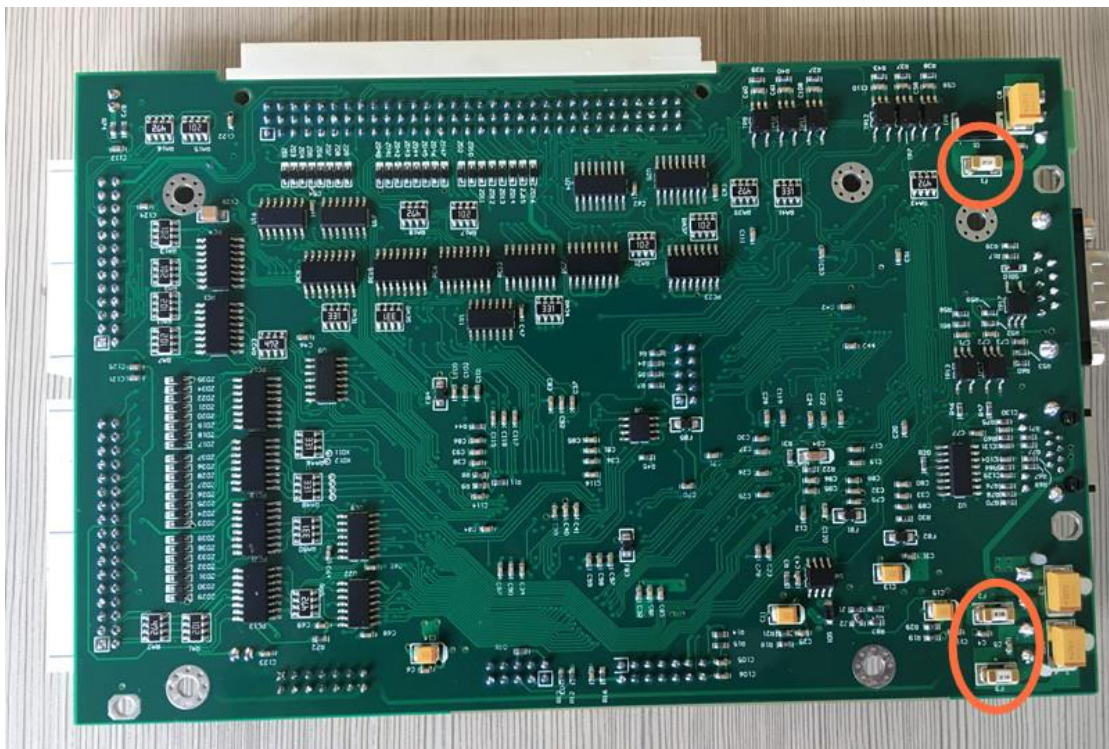


Corrective Actions:

Check DSP board CN2 plug and cables



If you have checked the above points and still do not find the problem, check the fuses on DSP board.



If fuses are good,
change a new DSP board