

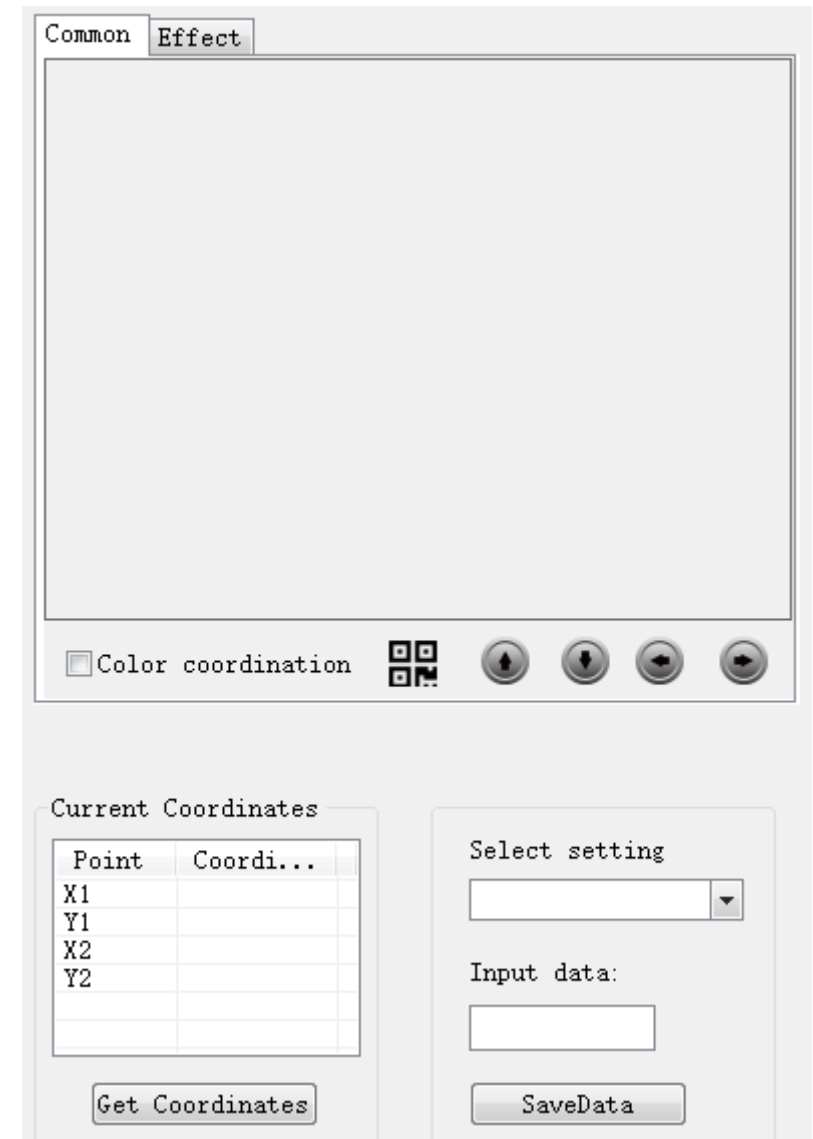
# CCD camera common problems and solutions

## Fault description:

1. Normal option window is blank.
2. When you click the CCD button, ibrightcut remind “Video card initialization failed”.
3. In the normal option window, the picture isn't clear.
4. Normal option window shows “No video signal”.

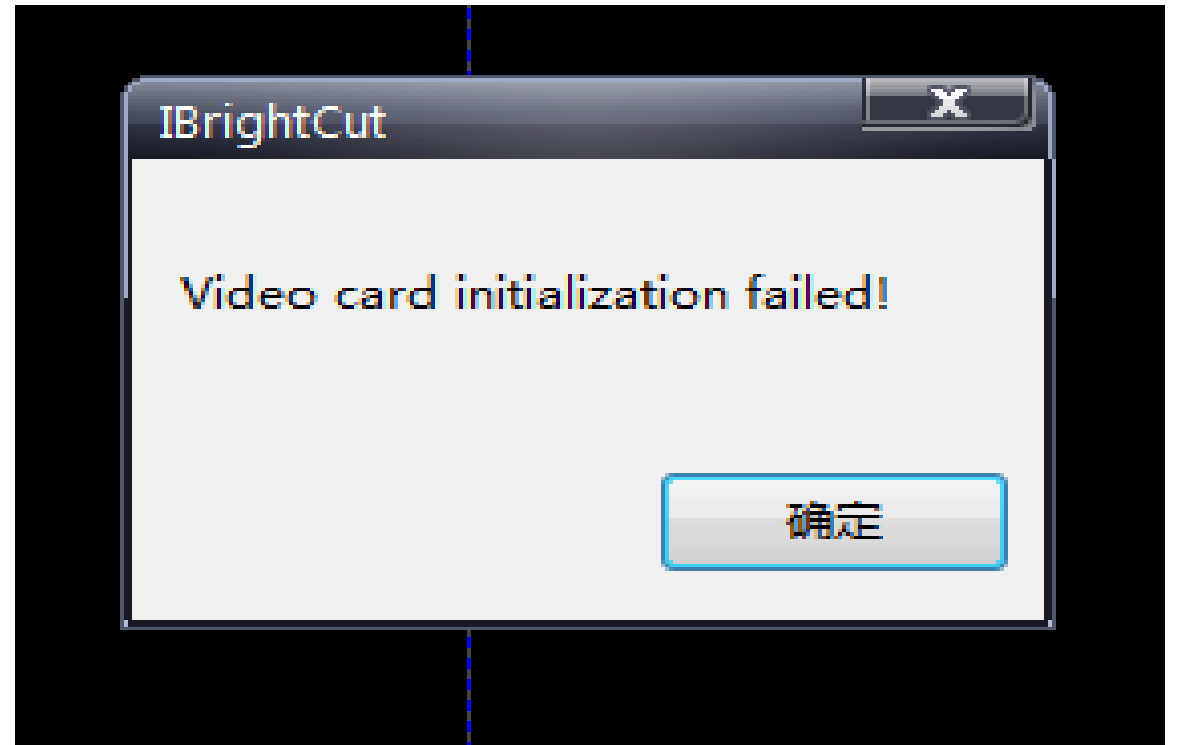
# 1. Normal option window is blank like this:

Make sure you have installed the graphics card drivers on PC. And the drivers should be updated to the newest version.



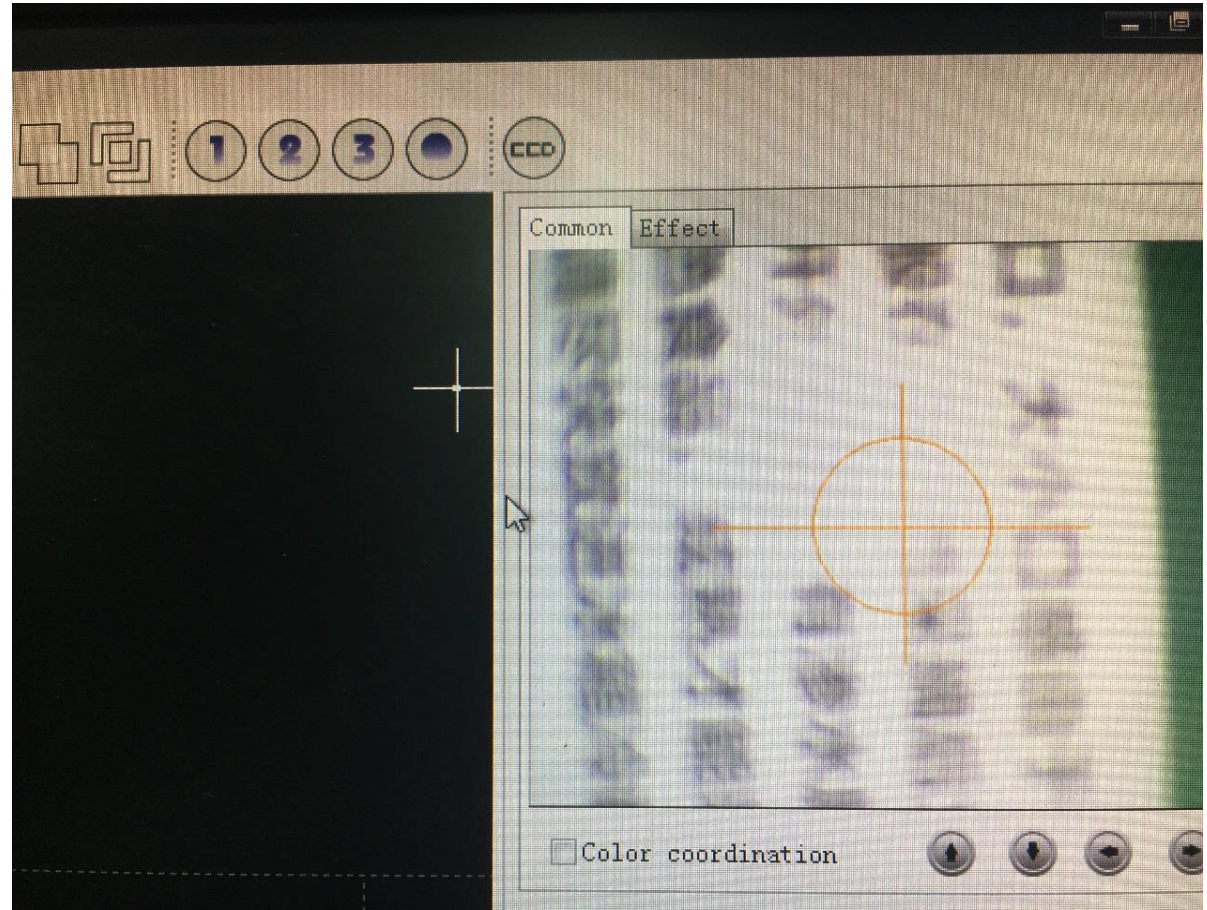
2. When you click the CCD button, ibrightcut remind  
“Video card initialization failed”:

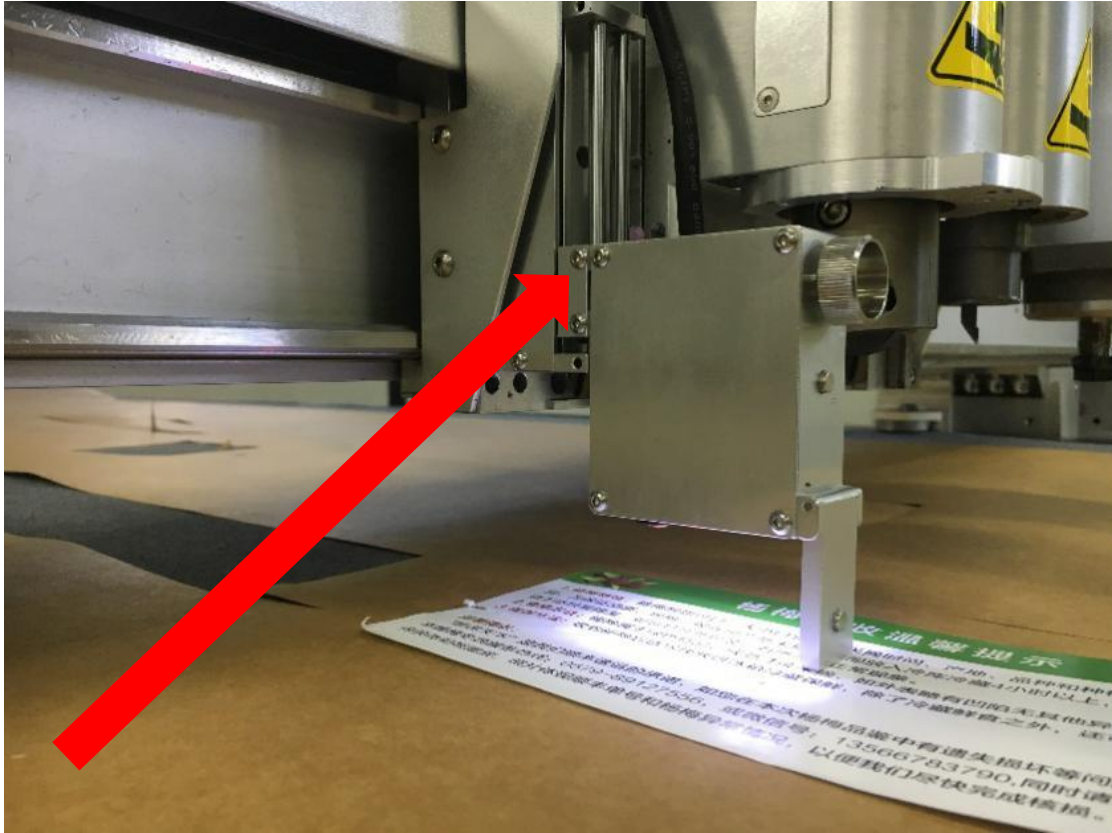
Check whether the  
video card is installed  
correctly or not.



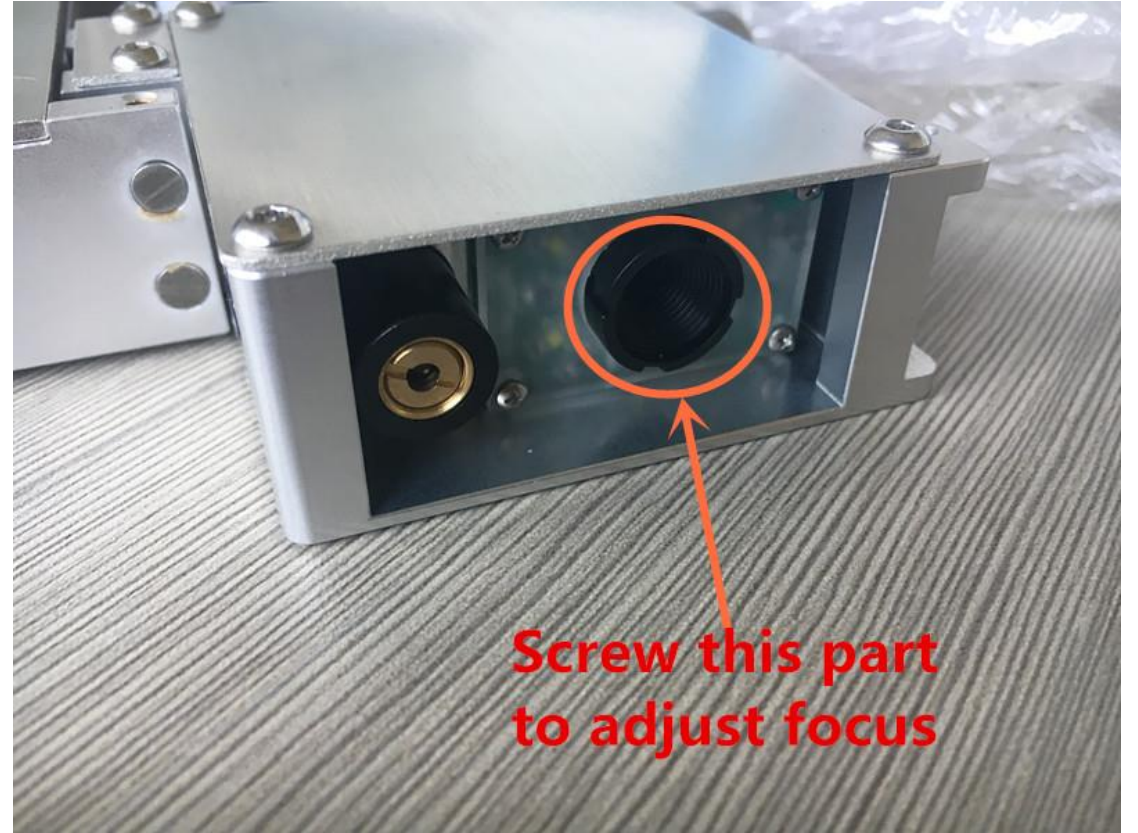
### 3. In the normal option window, the picture isn't clear:

First adjust the height of the camera, then adjust the focal length.





**1.Adjust the height of the camera.**

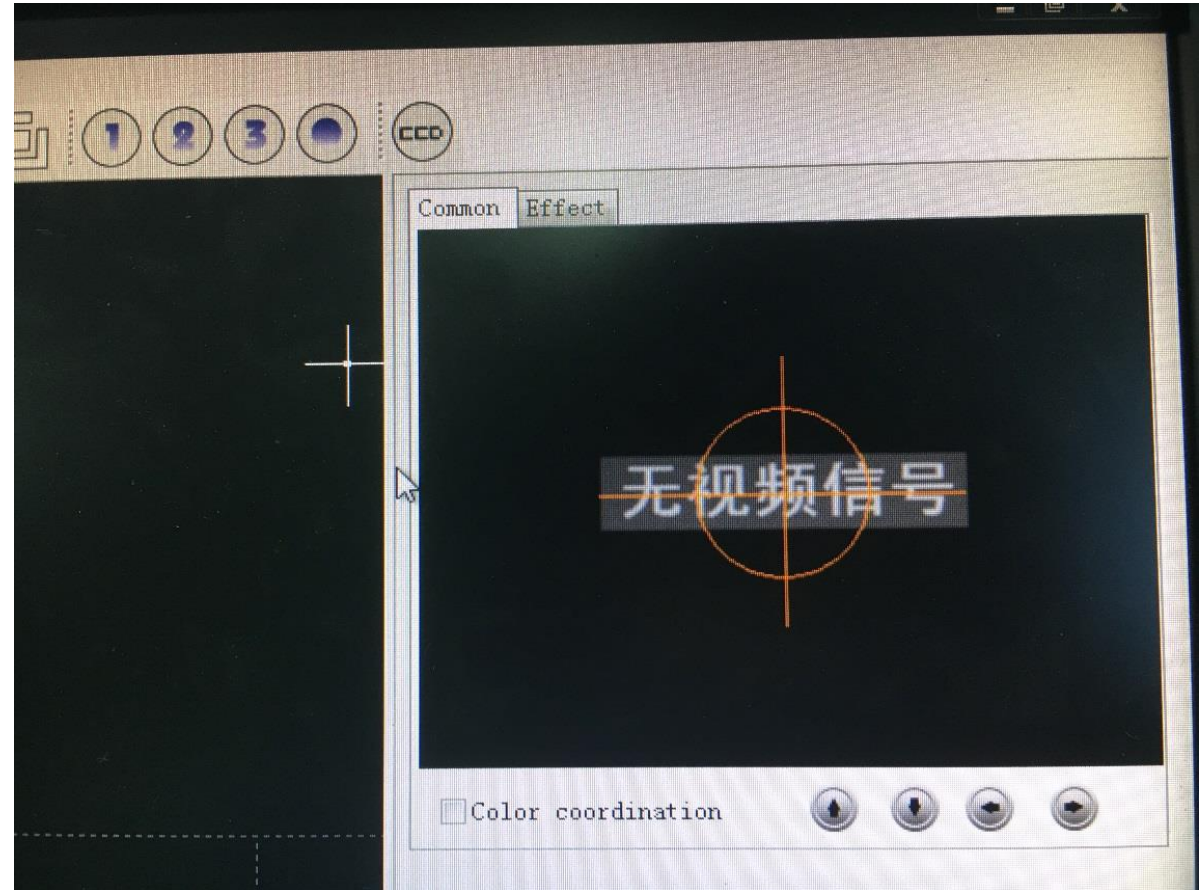


**2.Adjust the focus of the CCD camera**



## 4. Normal option window shows “No video signal”:

Check whether the video cable is connected normally or folded. And test the voltage of the camera cable plug on the B board. Normally the voltage should be around 3V. (Check the video in the following page)



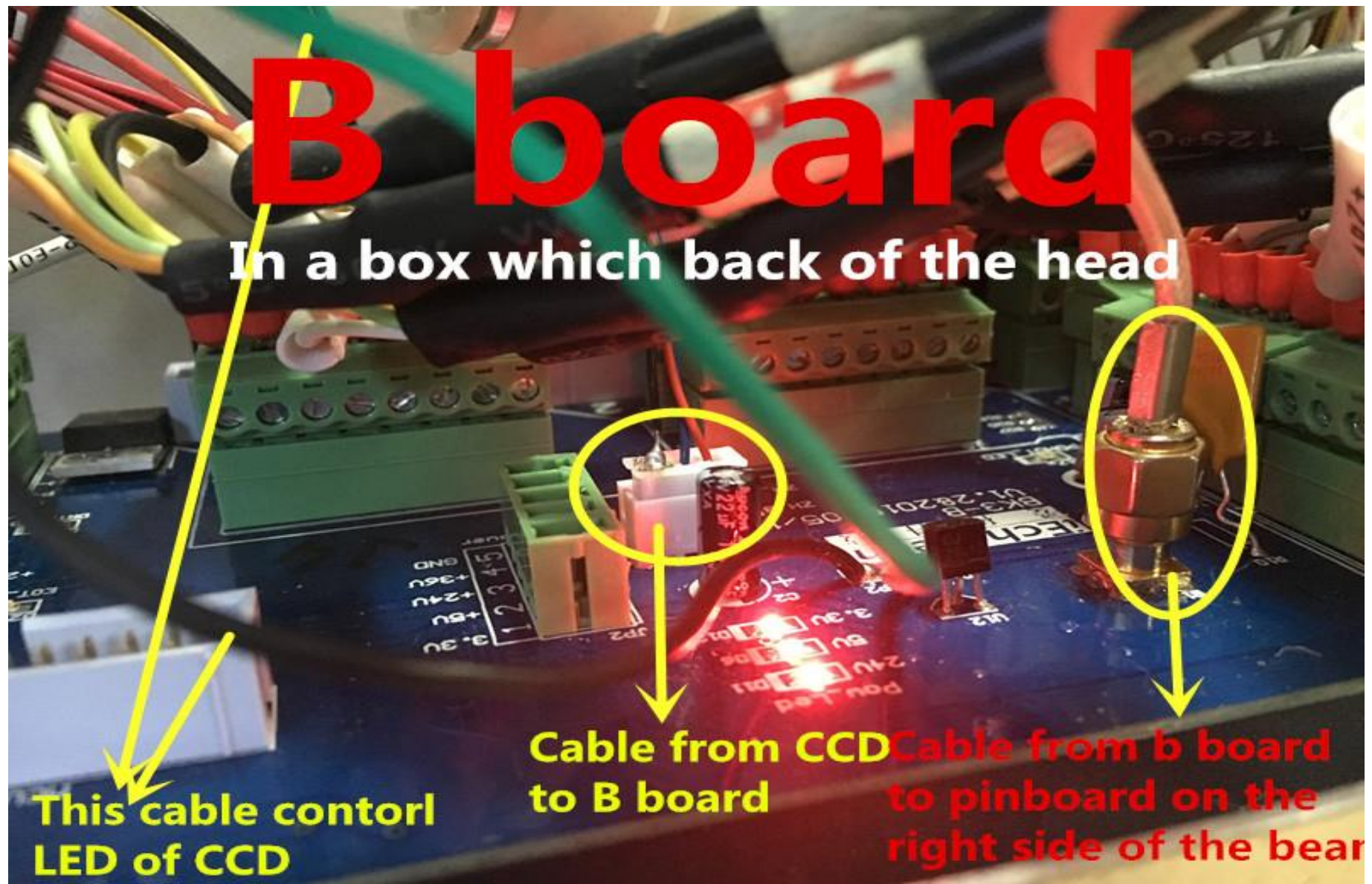
# B board

In a box which back of the head

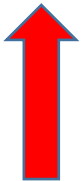
This cable control  
LED of CCD

Cable from CCD  
to B board

Cable from b board  
to pinboard on the  
right side of the bear



***iECHO***



**Check the video here.**