

Guidence of the Installation of BK

1. Before installation

1. Tools for installation

Allen Key Set



Open End Wrenches



Screwdriver



Pliers



Hand Drill (used for open packing box)



Crimping Tool (used for 380V power cable)





Electronic Level Meter (used for adjusting the machine height level)



Dial Gage (used for adjusting the machine table level)



2.Computer Configuration Requirement:

iBrightCut

System: Win7, Win10 32bit/64bit

Memory: 2G or above

CPU: i3 or above

Extended slot: 2 PCI-E slots

SmartCut

System: Win7,Win10, 32bit /64bit

Memory: 2G or above

CPU: i3 or above

Extended slot: 1 PCI-E slot

3.Power Requirement: (50HZ, 60HZ, Voltage±5%)

Three - phase Vacuum Pump	Voltage	Electric Current	Air Circuit Breaker	Wire Size	Wiring System
5.5KW	380V	8.3A	20A	6mm ²	L1、L2、L3、N、 G
7.5KW	380V	12A	20A	6mm ²	L1、L2、L3、N、 G
9KW	380V	14A	20A	8mm ²	L1、L2、L3、N、 G

Three -phase Vacuum Pump	Voltage	Electric Current	Air Circuit Breaker	Wire Size	Wiring System
5.5KW	220V	14.5A	30A	6mm ²	L1、L2、L3、G
7.5KW	220V	20A	50A	8mm ²	L1、L2、L3、G
9KW	220V	24A	50A	8mm ²	L1、L2、L3、G

Single-phase Machine+PC	Electric Current	Air circuit Breaker	Wire Size	Wiring System
220V	10A	15A	6mm ²	L、N、G

4. Air Supply Requirements:

Without POT	
Air Pressure	0.6MPA
Air Flow	0.4m ³ /min
With POT	
Air Pressure	0.8MPA
Air Flow	0.6m ³ /min

5. Flooring Space Requirement

Machine Dimension: Length X Width (With router, the height of regular router holder is 2.8meter)

Conveyor system	Length /Width	BK	BK3	TK3S
With	Length	length+1.8m	length+1.9m	length+1.9m
	Width	width+0.8m	width+0.9m	width+0.9m
Without	Length	length+0.8m	length+0.9m	length+0.9m
	Width	width+0.8m	width+0.9m	width+0.9m

6. Operation Space requirement:

Machine Dimension: Length X Width (With router, the height of regular router holder is 2.8meter)

Conveyor system	Length/ Width	BKL	BK3	TK3S
With	Length	length+3.4	length+3.4	length+3.4
	Width	width+1.8	width+2.4	width+2.4
Without	Length	length+2.4	length+2.4	length+2.4
	Width	width+1.8	width+2.4	width+2.4

2. During installation

1. Open packing box

8mm screw are used in the packing box and you can use Hand Drill for opening packing box by removing the screws on the machine feet.

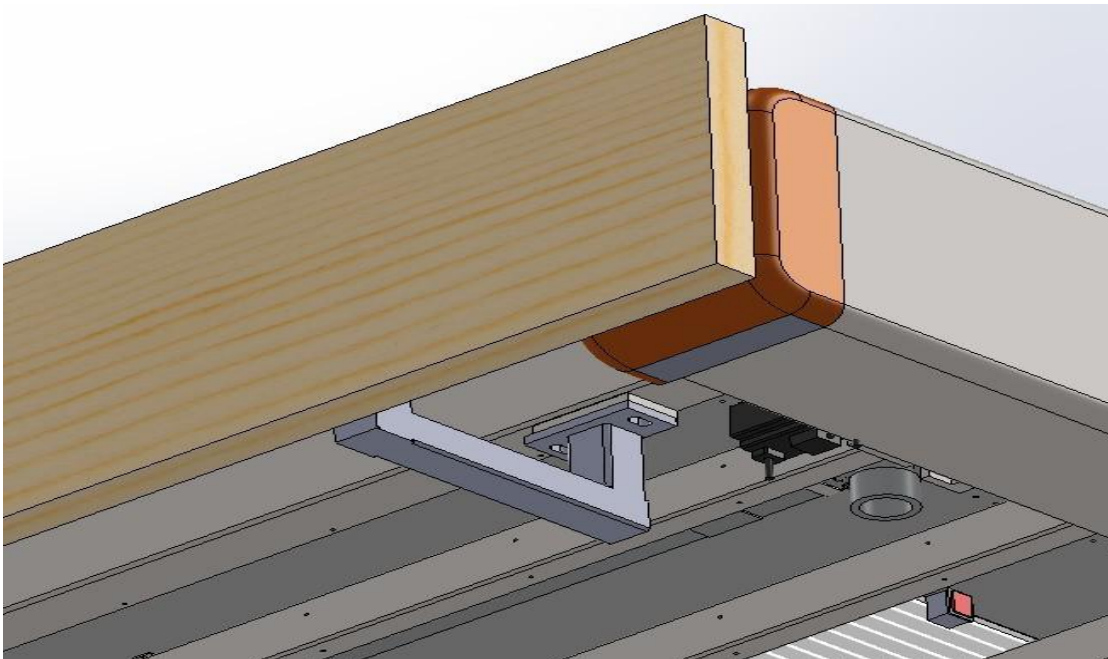


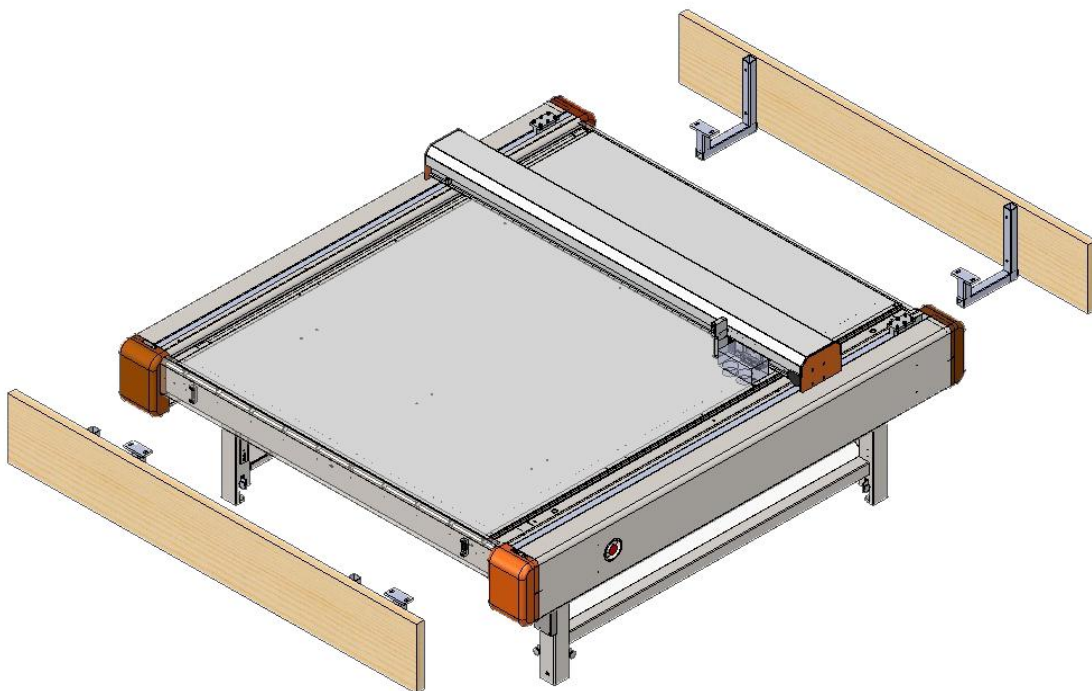
2. Move the machine

Move the machine to the suitable area



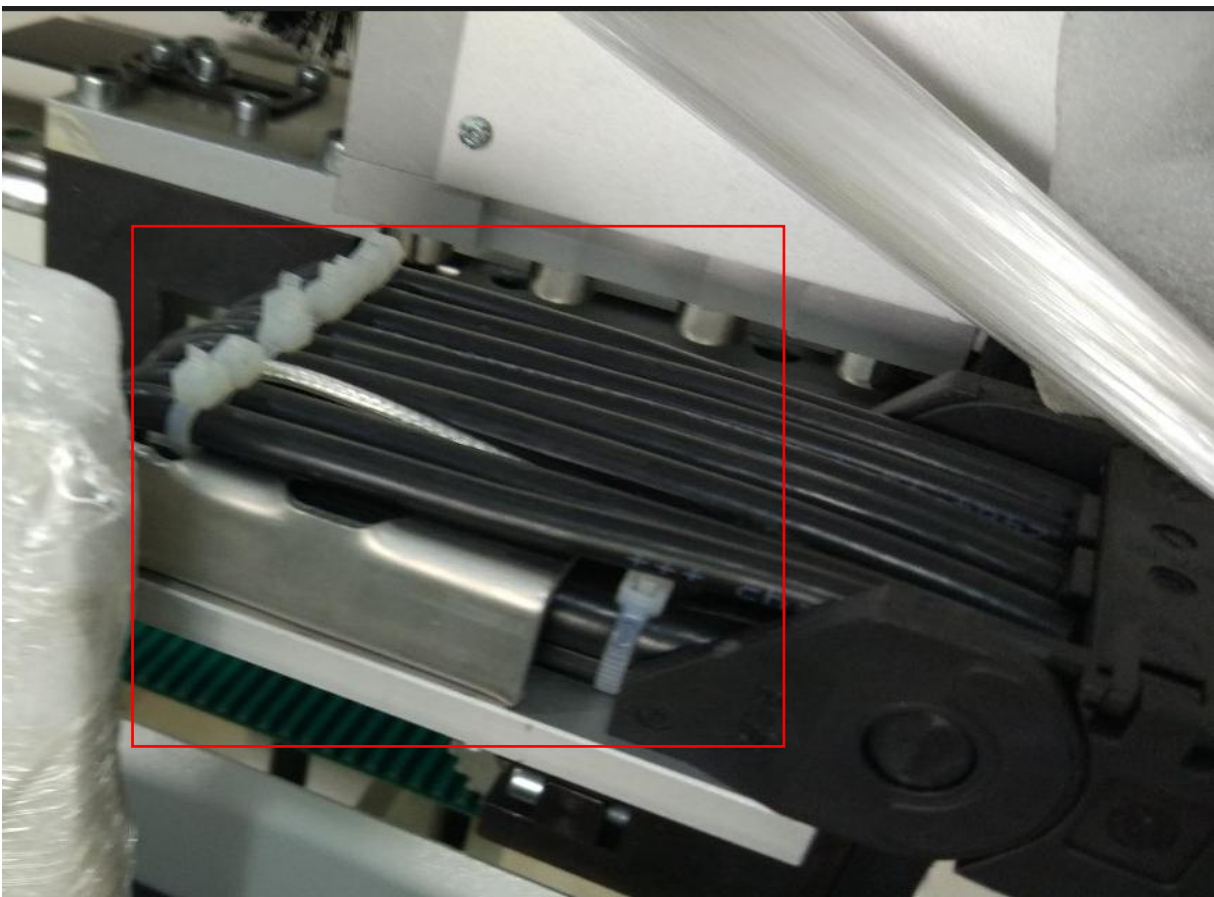
3. Dismantle the guard plate





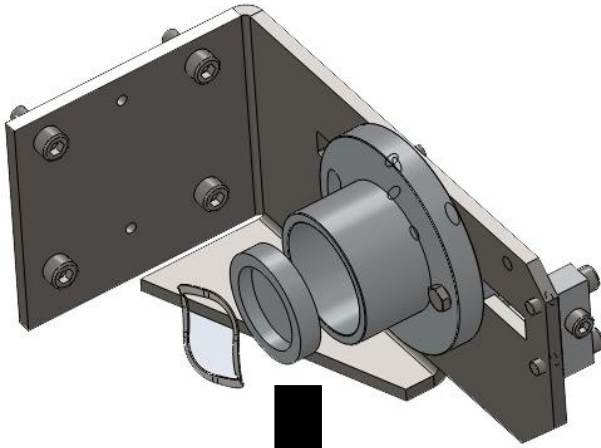
4. Install the support frame and drag chain

We have marked the installation area before we remove the frame screws, so just need to follow the mark points to install the support frame.

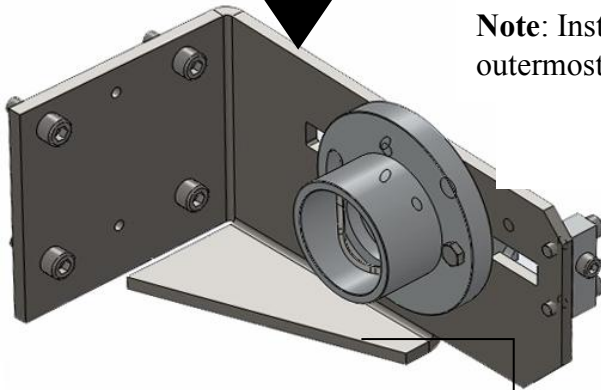


5. Install conveyor system

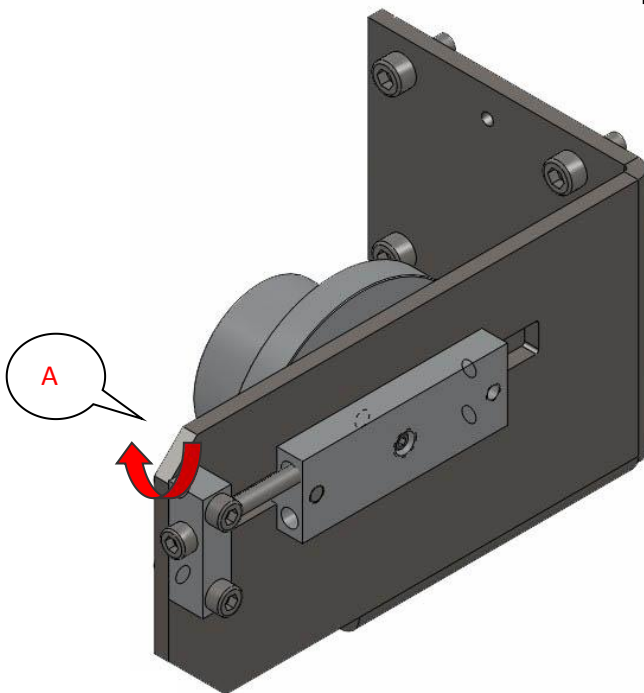
The installation of mounting plate for the conveyor cylinder



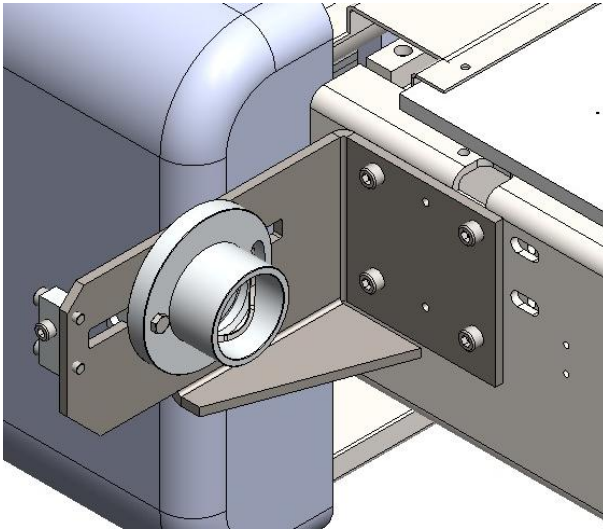
Note: Install the washer on the outermost.



This side faces down



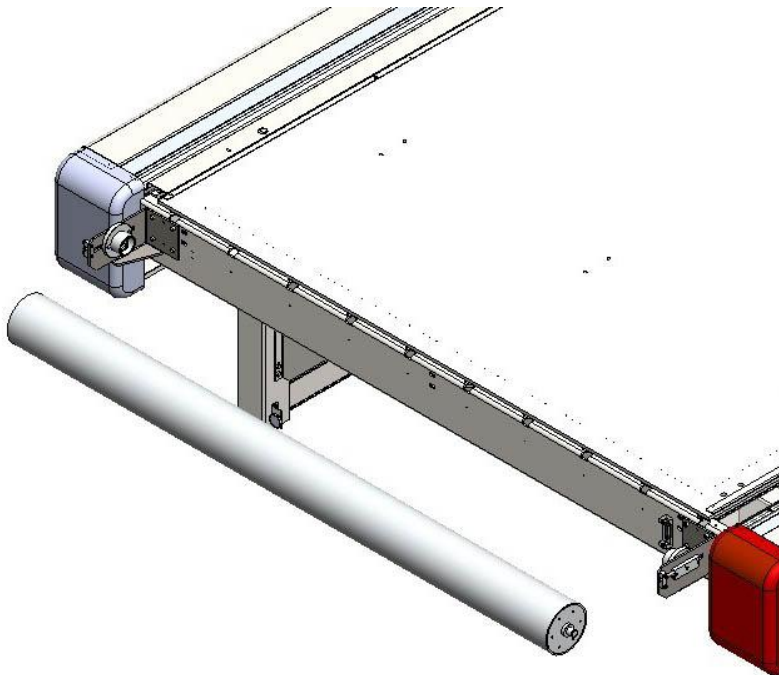
Pull the feeding roller cover to the outside by adjusting the inner hexagon screw A.

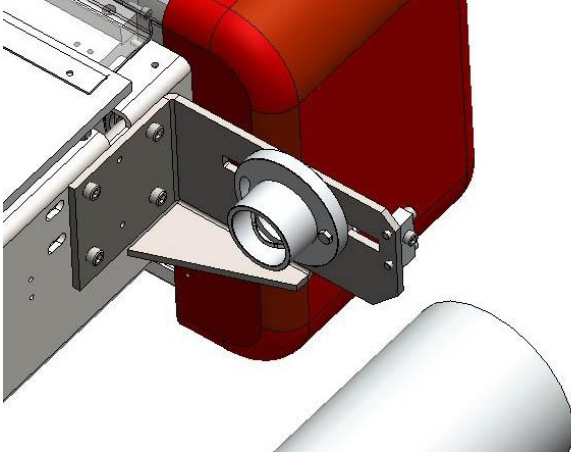


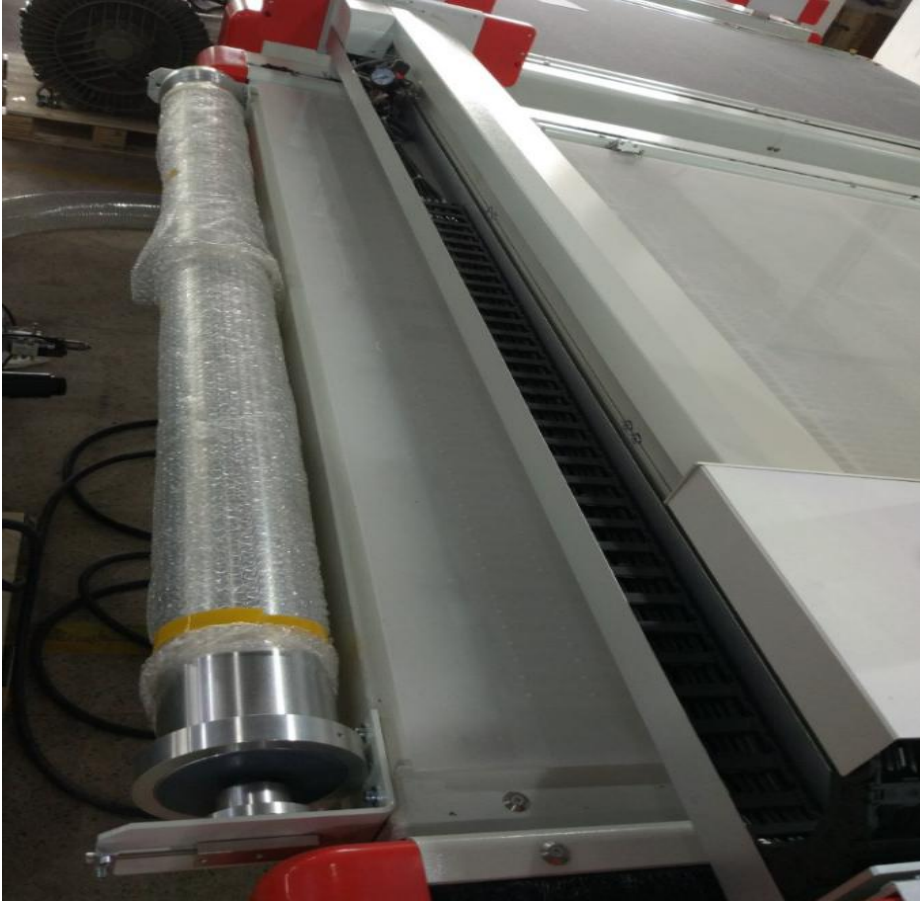
Note: When install the mounting plate, please do not tighten the 4 inner hexagon screws.

Installation of conveyor cylinder

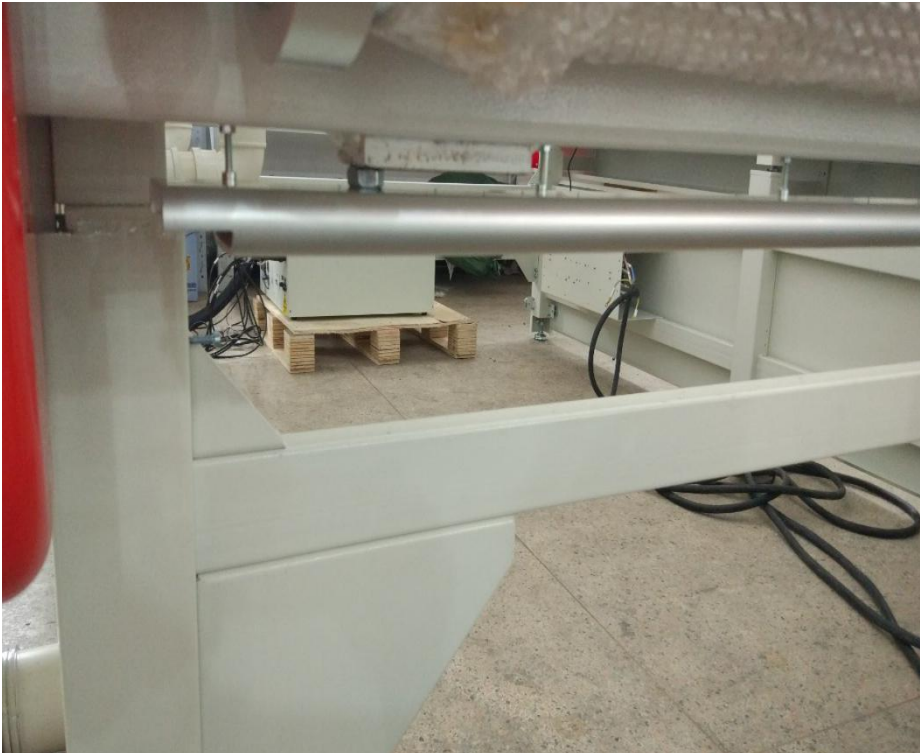
After installing one side of mounting plate, please install the conveyor cylinder in it firstly, then install the other side of mounting plate.







Install press felt pole(used for pressing the felt) one is in the front, the other in back of the machine.



6. Adjust the height of machine's four feet to make the table level



The screw at the bottom for making the foot up and down

The screw on the top for fixing the foot

7. Install the PVC pipe

Use PVC glue to connect the PVC pipe, which is shown in the follow picture.



8. Install the vacuum pump



Connect the PVC pipe with vacuum pump



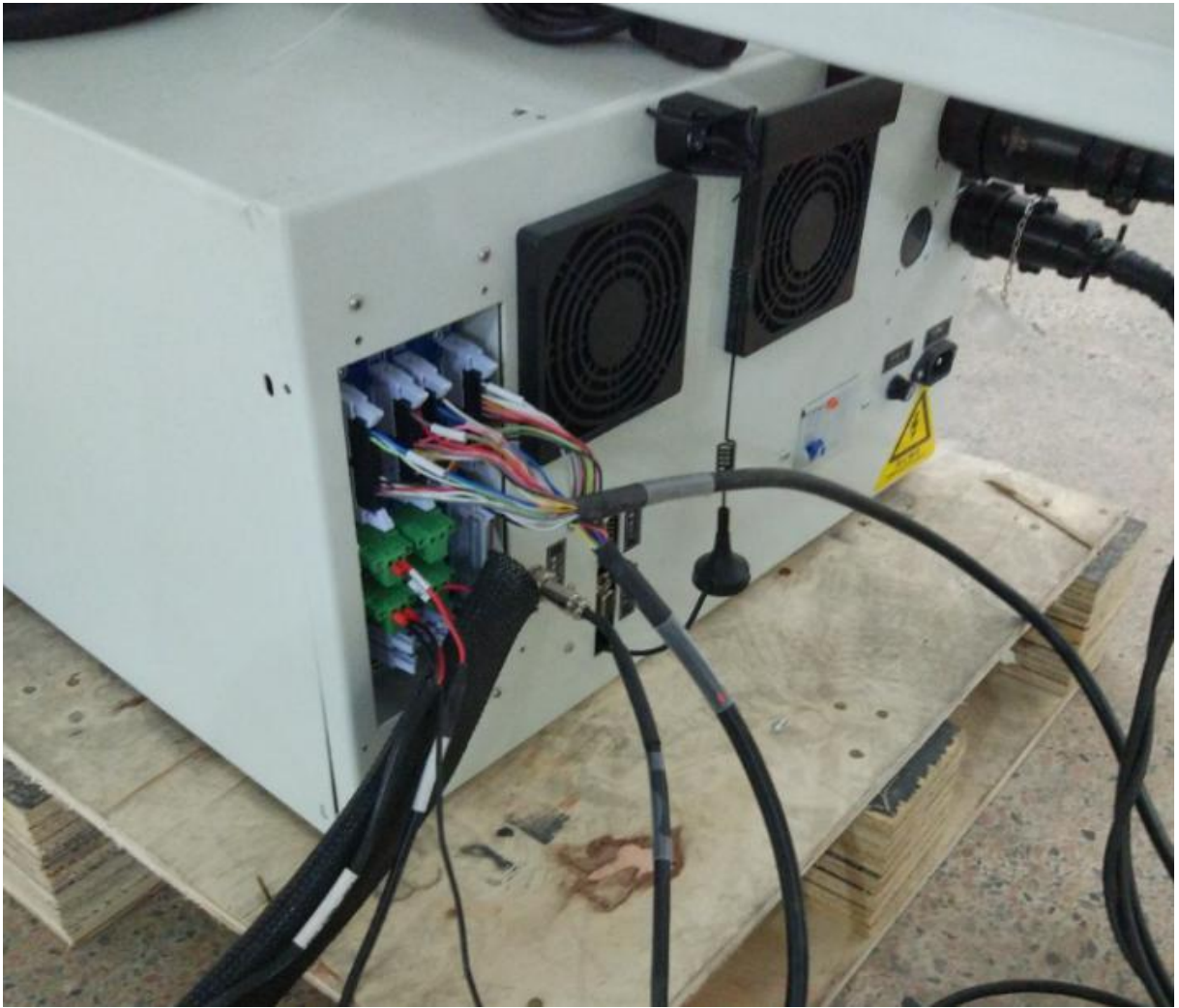
9. Connect cable and pipe

Plug black motor cables into the corresponding sockets on the electrical box. (plug of motor's power line and plug of motor's encoder line)

Plug white flat cables into the corresponding sockets according to the marks. (S7_1, S7_2, S9_1, S9_2, J1)

Connect green plugs to the corresponding sockets according to the marks. (Including Pause, Pump Valve, Pump Contact Control and Emergency Stop Button)

Connect COM Port to the computer with the serial port lines.

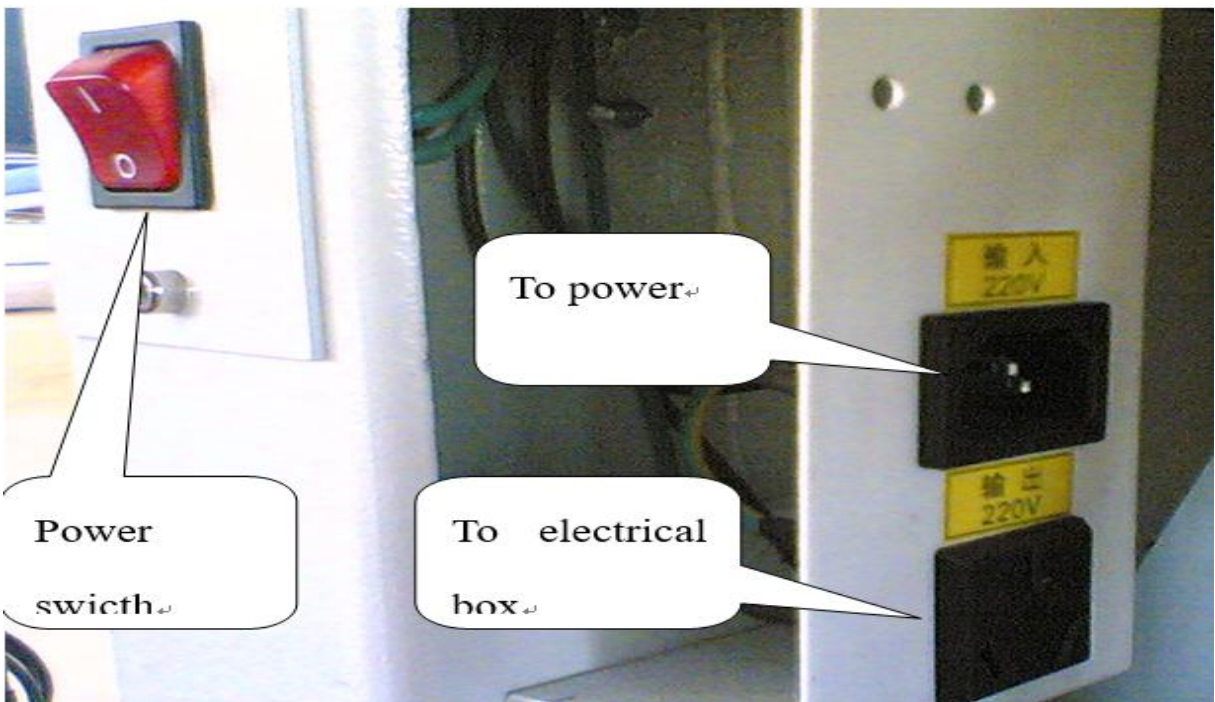








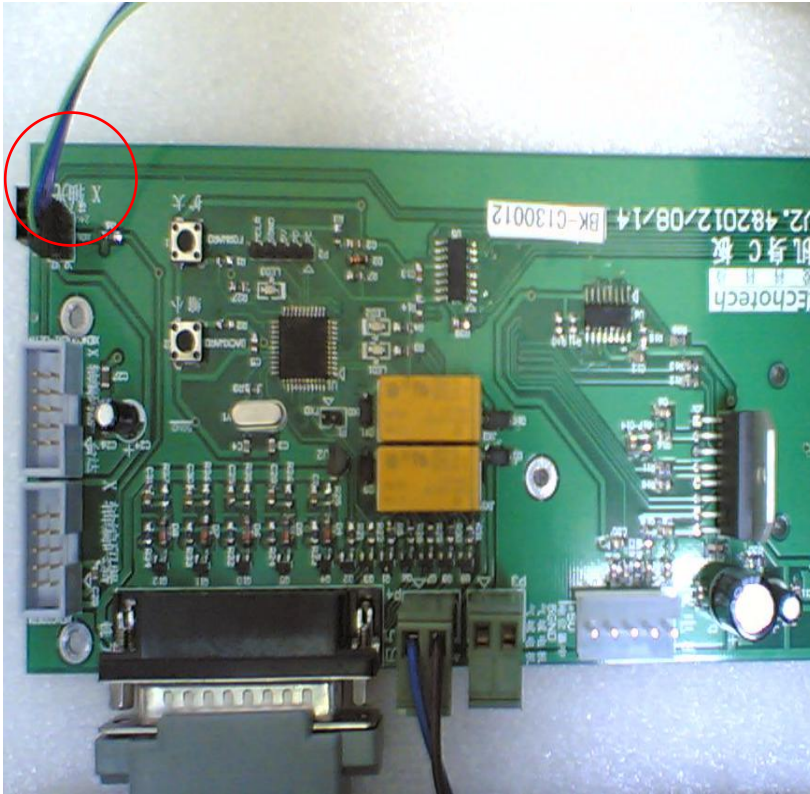
Two power cables with the cutting system: one is connected to the power slot from the customer's place and "220V input", the other is connected to "220V output" and power slot in the electrical box.



Customer must supply earth line with good condition.

During machine working, please ensure the power switches in the electrical box and leakage protector are open. And please open or close the machine power by using the power switch.

Photoelectric cable on X axis is connected to S1 slot on C board.



Wide flat cable is connected to MASTER1 slot.



Introduce air pressure

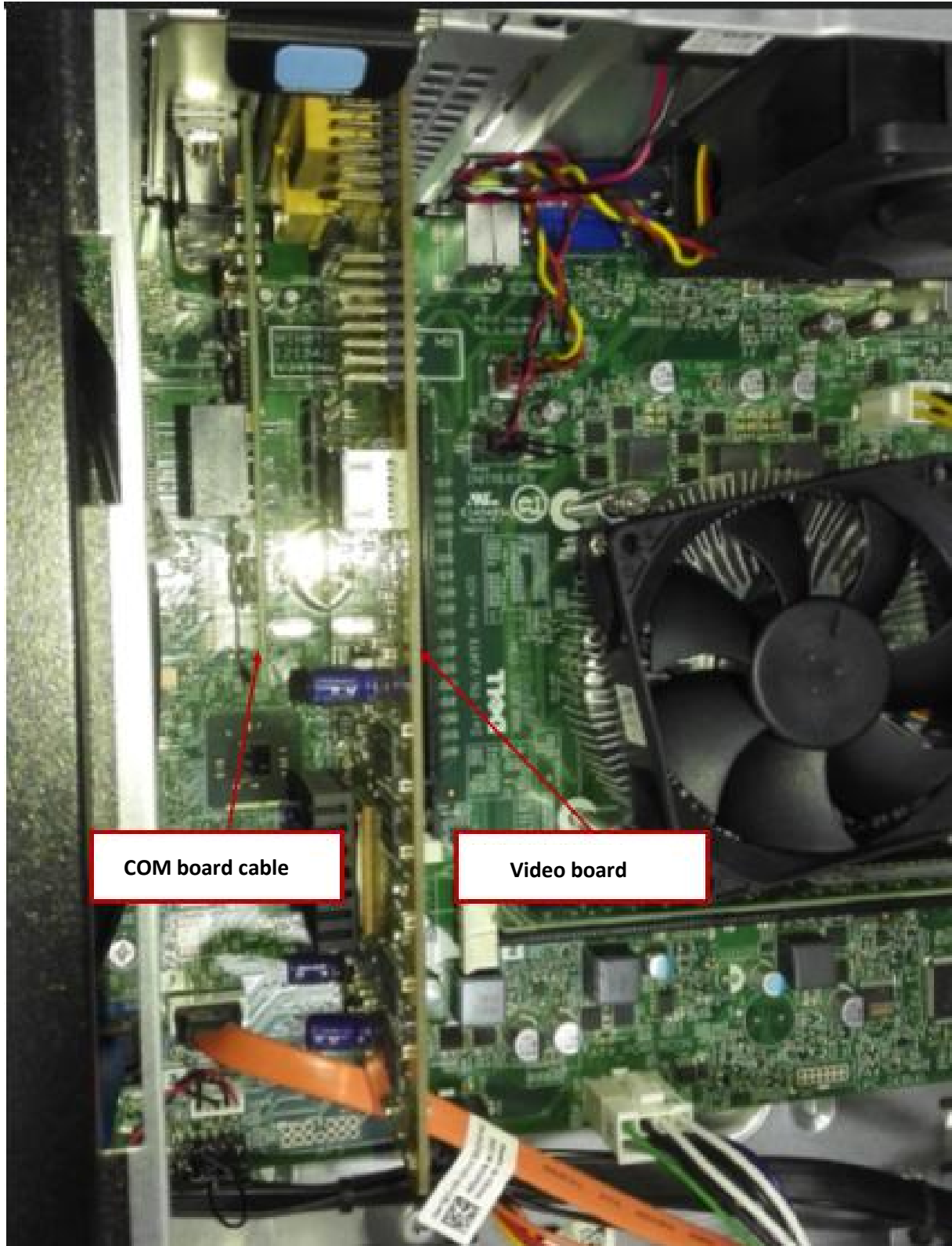


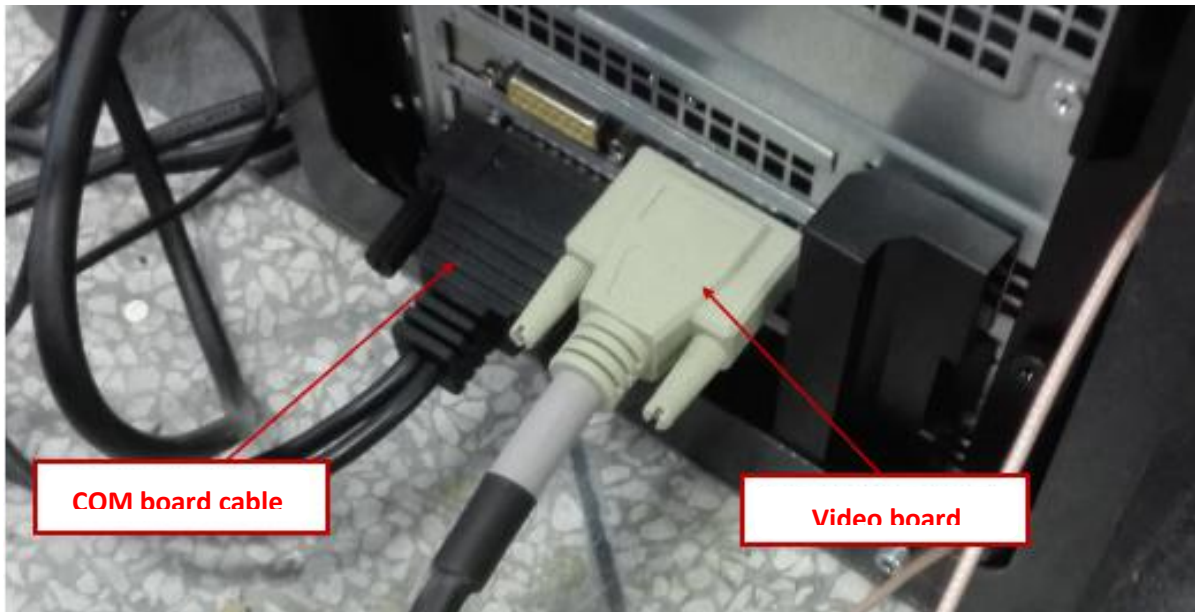
1. One side connects to frequency converter, the other side to electric box
2. Three phase(L1 L2 L3 GND) connect from frequency converter to vacuum

pump. When you turn on the pump, if it is only blow up, but not suck down, you need change the order of outside cables L1 L2 L3.

10. Install pc

COM communication board and video board





Connect the pc with electric box and the video cable needs to connect to the red one



11. Install the safety device



12. Paste the felt

Spread the felt on the table, then use 498 glue to paste the felt.

Put the wood plate under the felt, so it will not paste the table.



13. Cover the machine and finish the installation

