

Table level adjustment instruction

Step 1

Find the seam of the felt and spilt it. Remove the felt.



You can see many screws under the table. We need to screw them to adjust table level.

Step2



Remove all cutting head.

Fix the holder like the picture shows

Step3

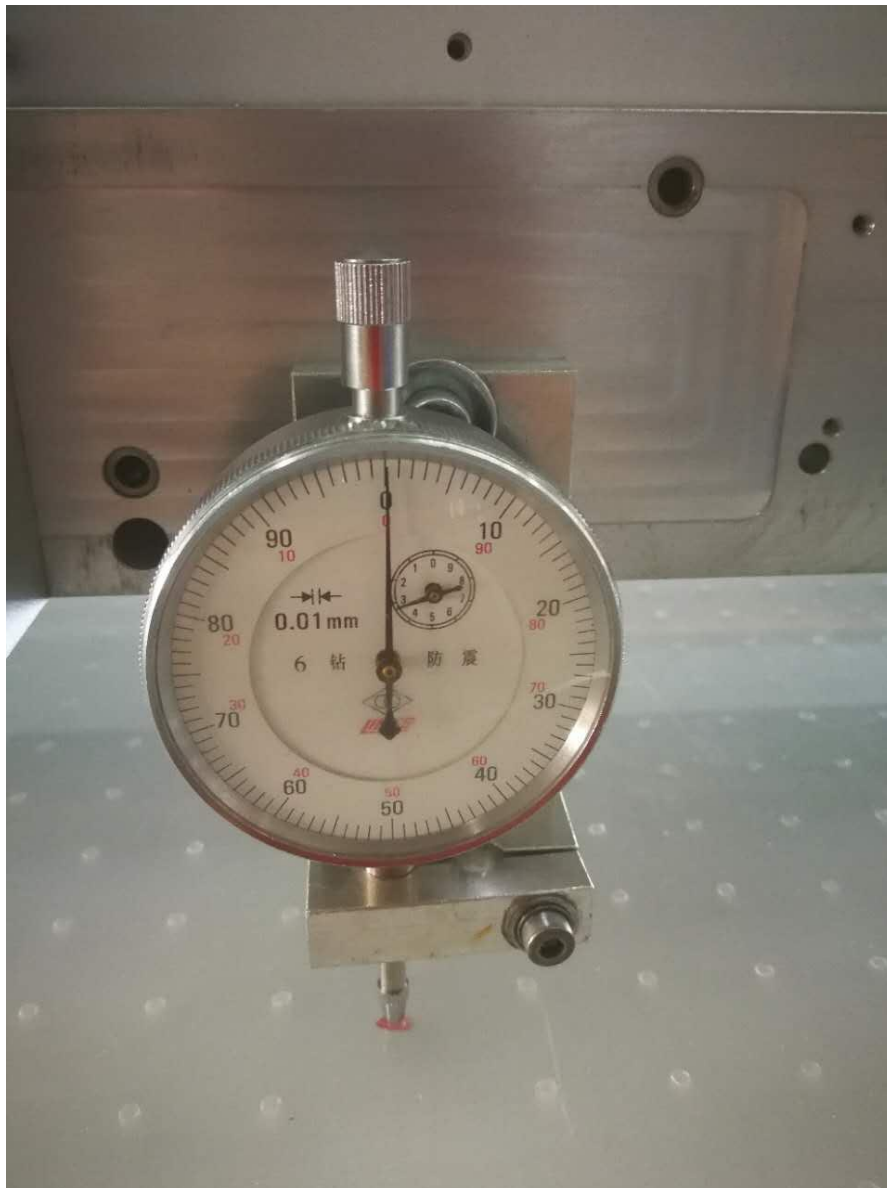
Fix the dial indicator as below

Move the beam to origin point(zero point)

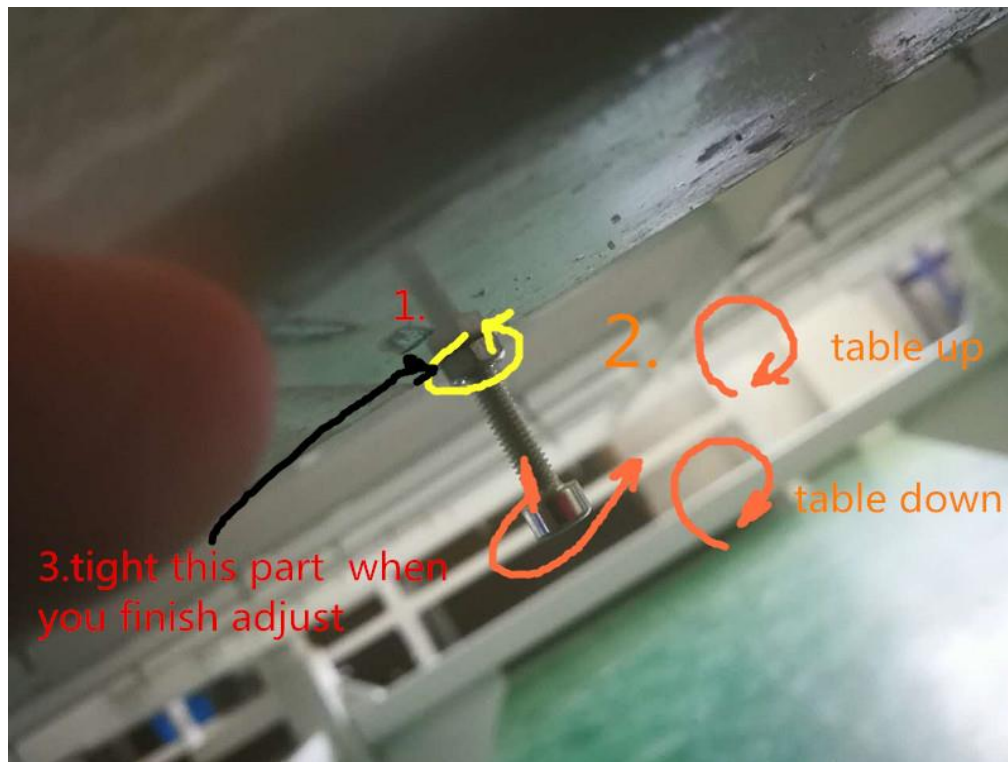


Adjust the height of the dial indicator

Make sure the long pointer point to 0



Step4



Make sure average error $\pm 0.05\text{mm}$

Please adjust one by one according to the position of screws

When you finish those work, please use the 498 glue (in the tool box) splice the felt as well as before.