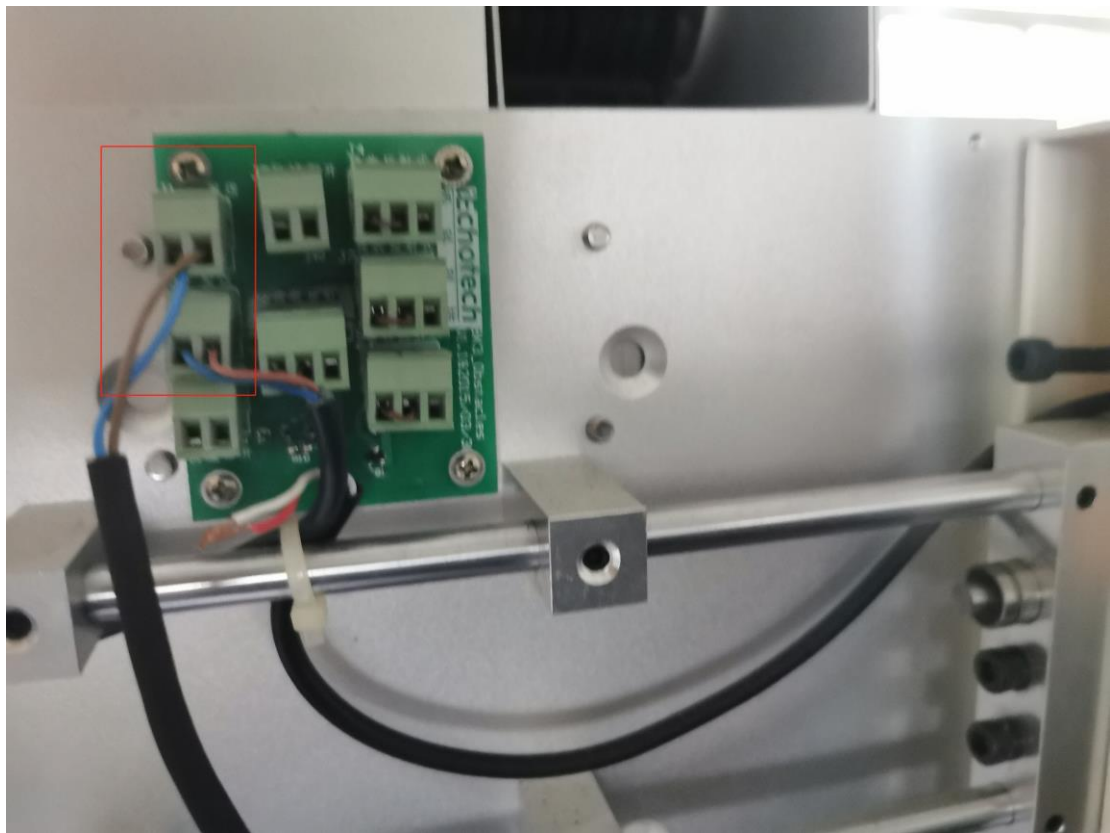
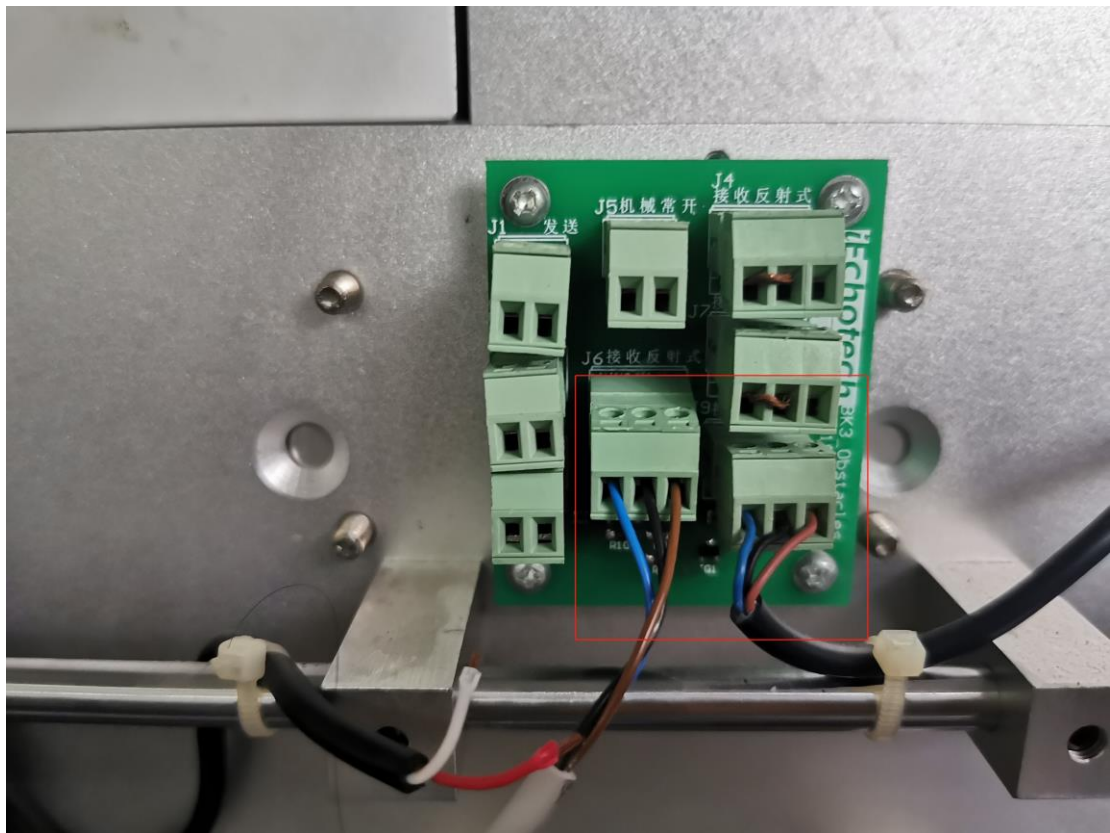
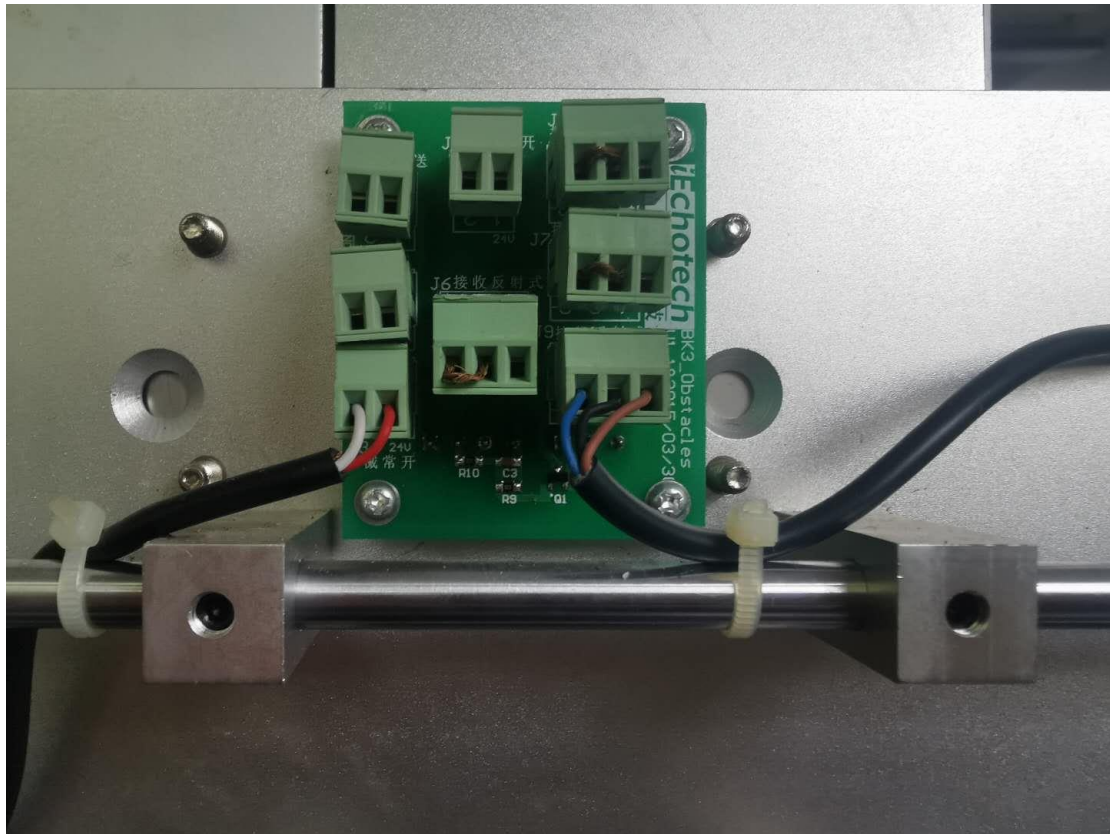


how to change the mechanical anti-collision switch to an infrared through-beam photoelectric switch





This is the wiring diagram of the device close to the origin. The above picture is the original wiring. The bottom picture is the wiring diagram after removing the mechanical switch and adding the photoelectric switch.



This is the wiring diagram of the device on the left side of the origin position. The above picture is the old wiring diagram, and the picture below is the wiring diagram after replacing the photoelectric switch. Since the signal receiving device is on the left, the photoelectric switch on

the left has three wires